

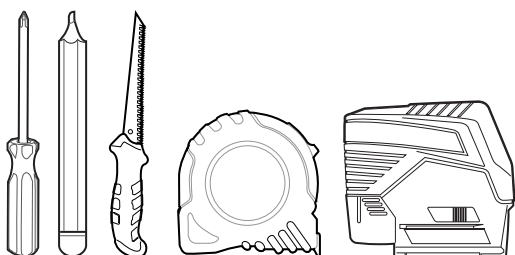
Ensure that products are mounted with supplied, recommended or appropriate screws and fixings to suit the mounting surface.

WARNING

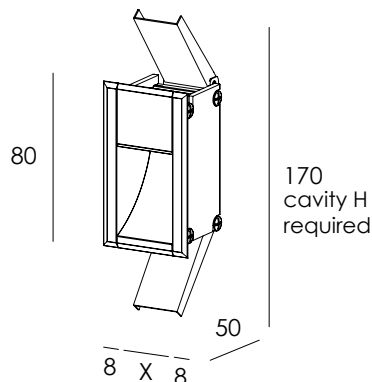
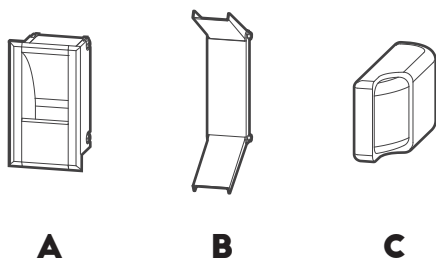
INSTALLATION IS ONLY TO BE CARRIED OUT BY SUITABLY QUALIFIED PERSONS IN ACCORDANCE WITH INSTALLATION INSTRUCTIONS AND ALL APPLICABLE REGULATIONS OR STANDARDS. (IMPROPER INSTALLATION CAN CREATE AN ELECTRICAL HAZARD WITH RISK OF ELECTRIC SHOCK, FIRE OR INJURY). DARKON WILL NOT BE HELD RESPONSIBLE FOR ANY CONSEQUENCES ARISING FROM IMPROPER PRODUCT HANDLING, STORAGE OR INSTALLATION.

TOOLS REQUIRED

SCREW DRIVER / PENCIL / WALLBOARD SAW / APPROPRIATE MEASURING INSTRUMENTS / LASER PLUM



COMPONENTS



MAINTENANCE



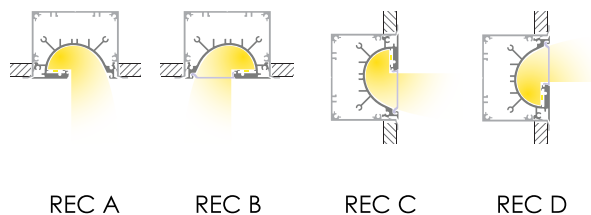
Wipe product with a clean dry microfiber cloth. Do not use any cleaning products/ chemicals to clean product.

SERVICING

- 'Remote Driver' can be replaced if deemed faulty

ORIENTATION

Ensure luminaire is correctly oriented to produce desired light direction.



	DISTANCE	DESCRIPTION
A)	SIZE 30 38MM	CUTOUT WIDTH
	SIZE 60 68MM	
	SIZE 90 98MM	
	SIZE 120 128MM	
B)	73MM	CUTOUT HEIGHT
C)	50	CAVITY HEIGHT REQUIRED
D)	50MM	OVERALL WIDTH

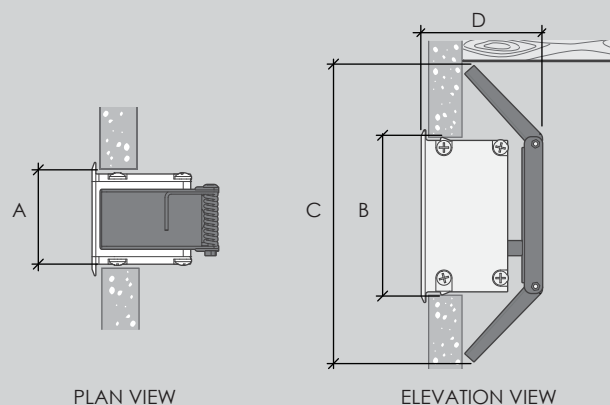
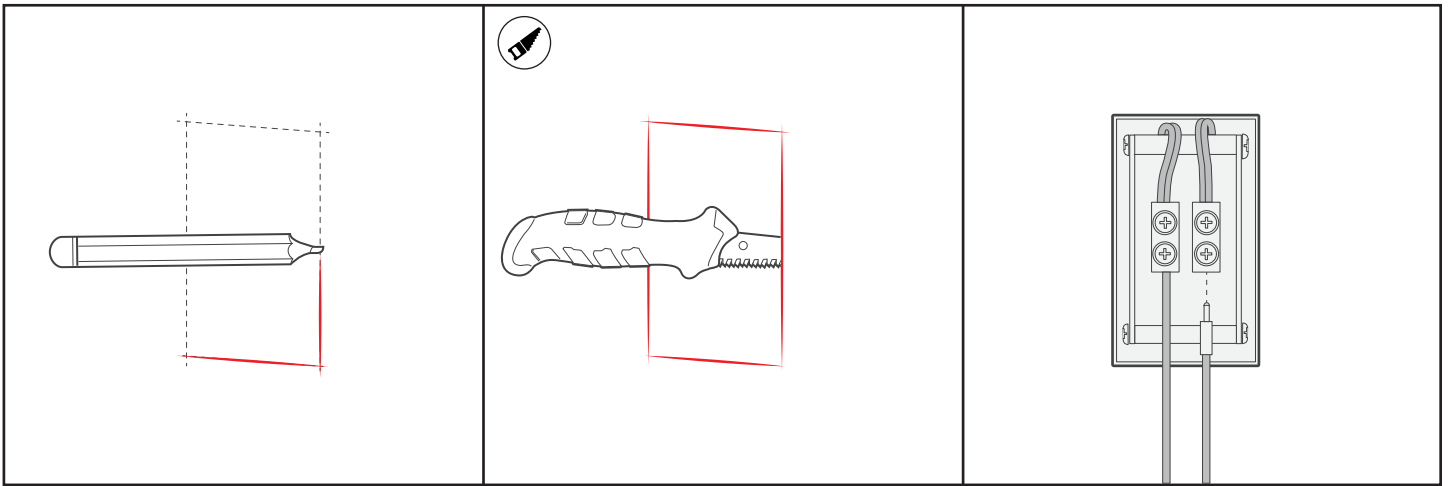


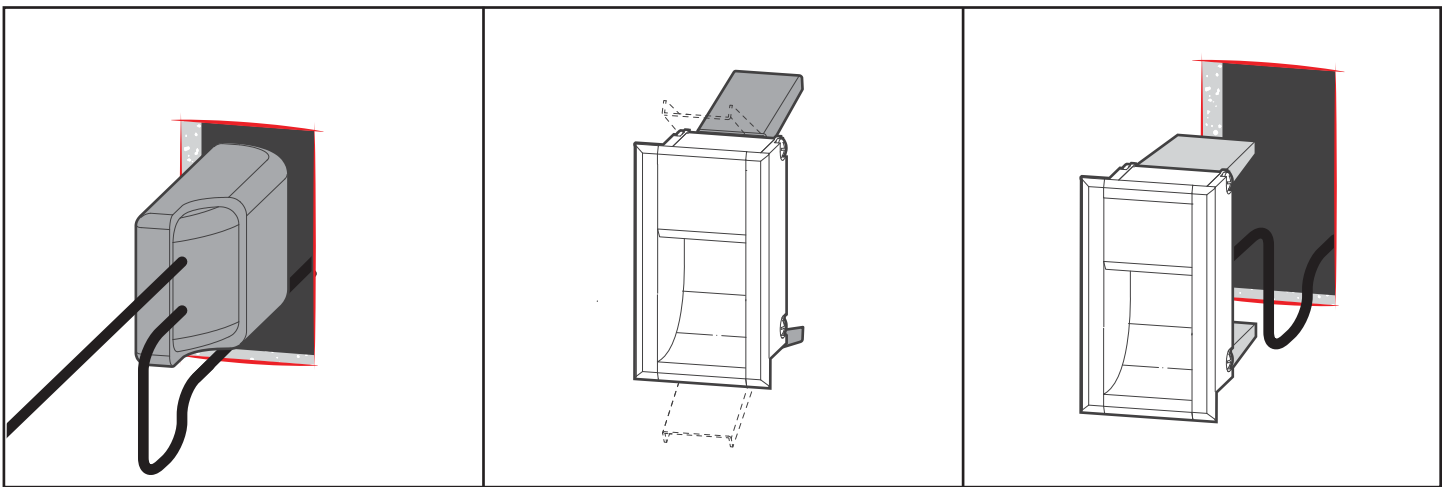
FIGURE 1. CRITICAL DIMENSIONS



1.
Measure and mark the appropriate cut out.
See figure 1. for critical dimensions

2.
With the appropriate cutting tool; score
and cut away the hole for the light fitting.

3.
Attach wires from the LED Driver to the
terminal block. Fasten with a screw driver.



4.
Insert the driver in the hole cut out.

5.
Bend spring clips back.

6.
Insert Fitting into cutout.

FOR OPTIMAL LONGEVITY, ENSURE UNRESTRICTED
AIRFLOW OVER LUMINAIRE & REMOTE DRIVER.
**DO NOT COVER LUMINAIRE OR DRIVER WITH
INSULATION. DO NOT STACK DRIVERS.**

