

SLIM TRIM MK4

RECESSED PROFILE

DARKON™
THE EDGE OF LIGHT

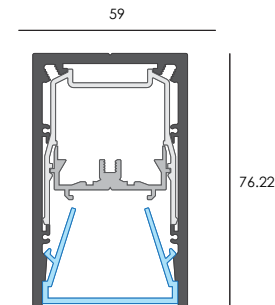
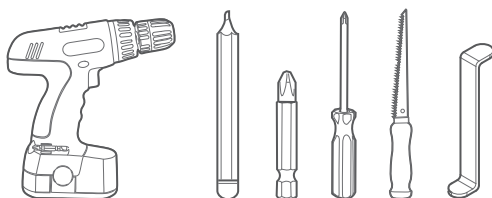
Ensure that products are mounted with supplied, recommended or appropriate screws and fixings to suit the mounting surface.

WARNING

INSTALLATION IS ONLY TO BE CARRIED OUT BY SUITABLY QUALIFIED PERSONS IN ACCORDANCE WITH INSTALLATION INSTRUCTIONS AND ALL APPLICABLE REGULATIONS OR STANDARDS. (IMPROPER INSTALLATION CAN CREATE AN ELECTRICAL HAZARD WITH RISK OF ELECTRIC SHOCK, FIRE OR INJURY). DARKON WILL NOT BE HELD RESPONSIBLE FOR ANY CONSEQUENCES ARISING FROM IMPROPER PRODUCT HANDLING, STORAGE OR INSTALLATION.

TOOLS REQUIRED

POWER DRILL / PENCIL / PHILLIPS DRIVER / SCREWDRIVER
WALLBOARD SAW / LENS REMOVAL TOOL



MAINTENANCE

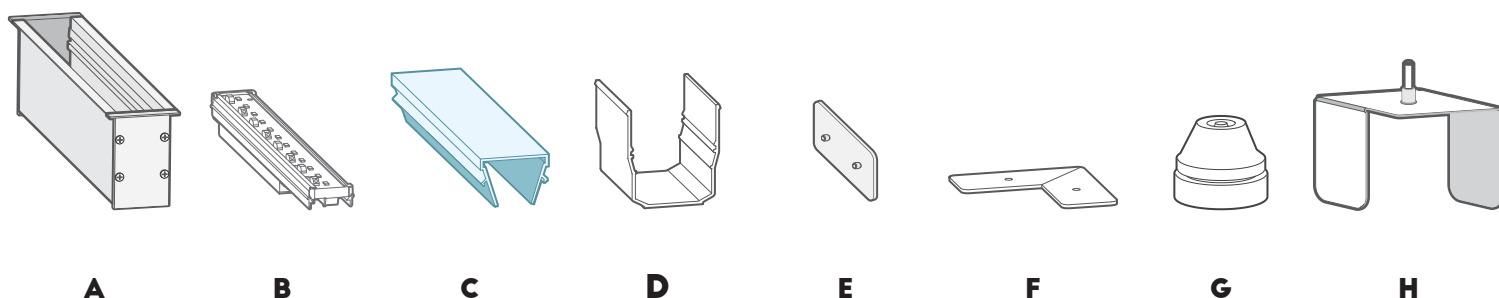
Wipe product with a clean dry microfiber cloth. Do not use any cleaning products/chemicals to clean product.



SERVICING

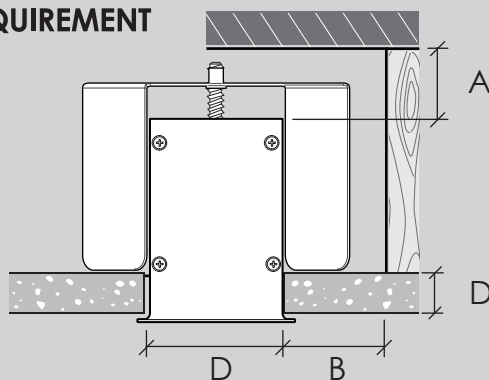
Lens can be removed w/ suction cups or lens removal tool.
'Light Tray' can be replaced if deemed faulty.

COMPONENTS

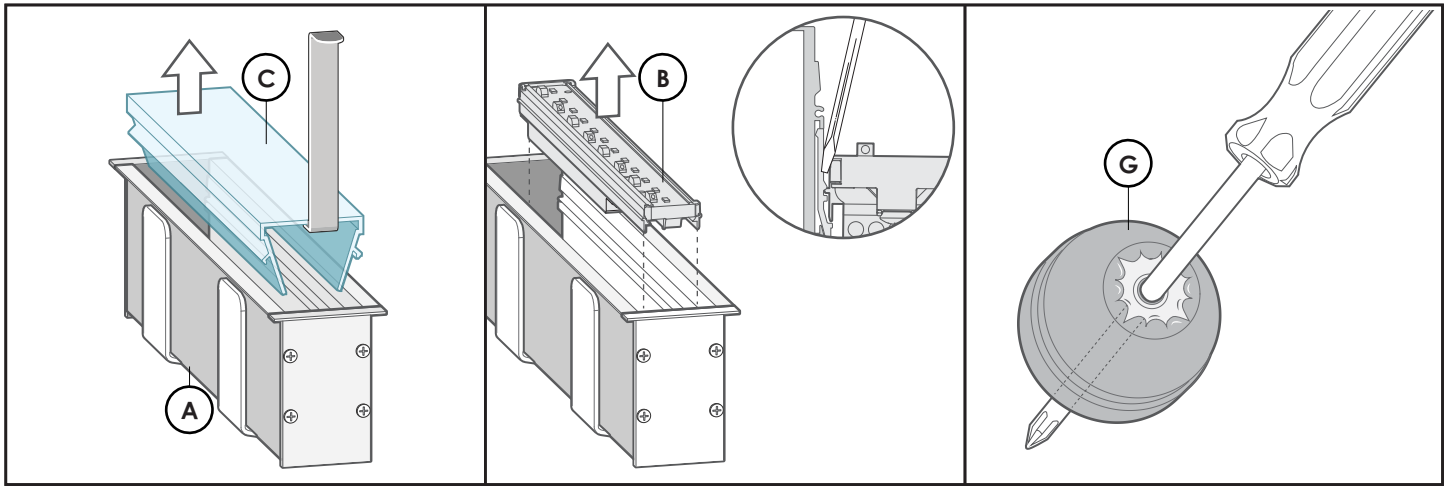


MINIMUM AREA REQUIREMENT

FIGURE 1.
FOR OPTIMAL LONGEVITY,
ENSURE UNRESTRICTED AIRFLOW
OVER LUMINAIRE
DO NOT COVER W/ INSULATION



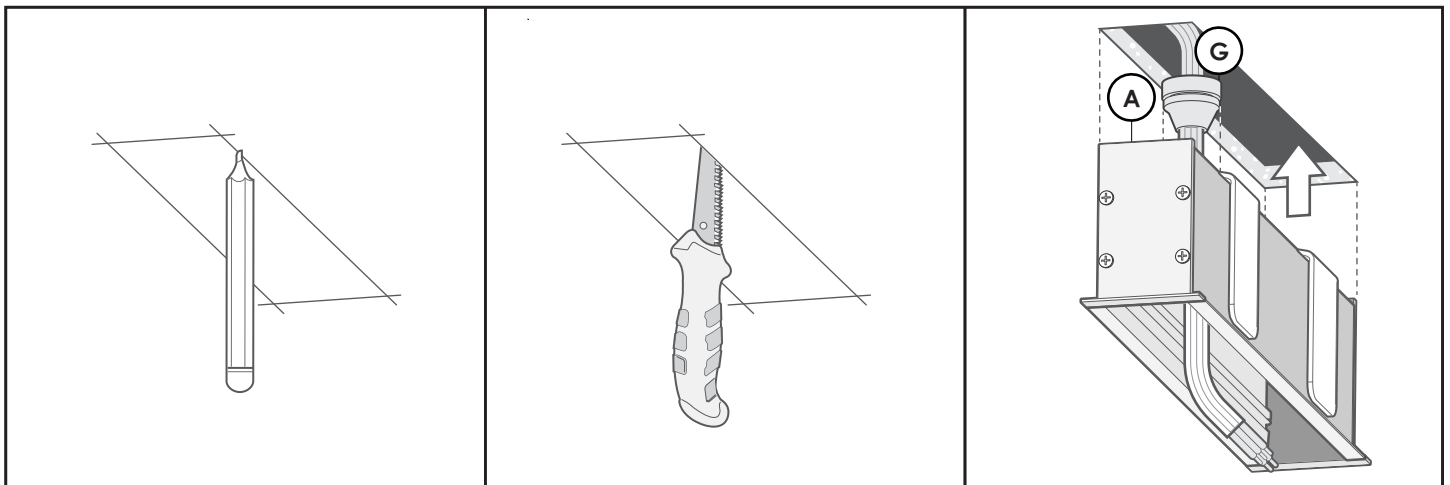
	DISTANCE	DESCRIPTION
A)	40MM	CLEARANCE FOR TOP OF LUMINAIRE
B)	45MM	CLEARANCE B/W STRUCTURAL MEMBER
C)	20MM	MAXIMUM WALL BOARD THICKNESS
D)	50MM	CUTOUT WIDTH



1.
Use lens removal tool to lever *Lens(C)*
out of clipping detail

2.
Remove *Light Tray(B)* using a flat
screw driver to lever out of clips.

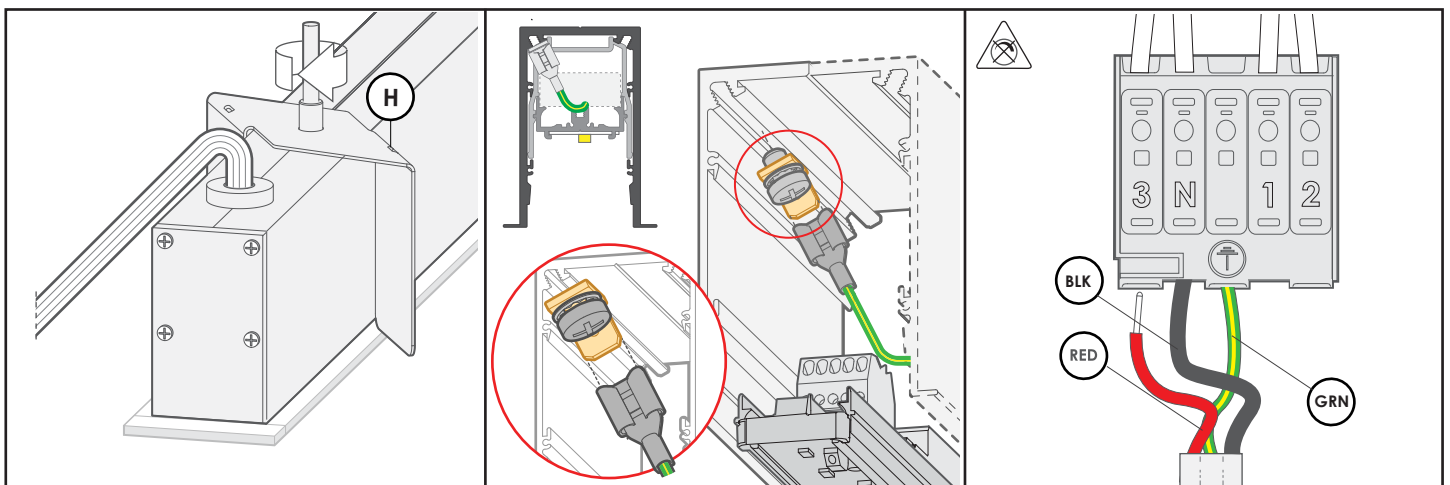
3.
Pierce the *IP Grommet(G)* with the tip
of a screw driver.



4.
Measure and mark the appropriate
cut out for where the fitting is to be
installed.

5.
Make the cut-out using a Wallboard
Saw(or appropriate tool).

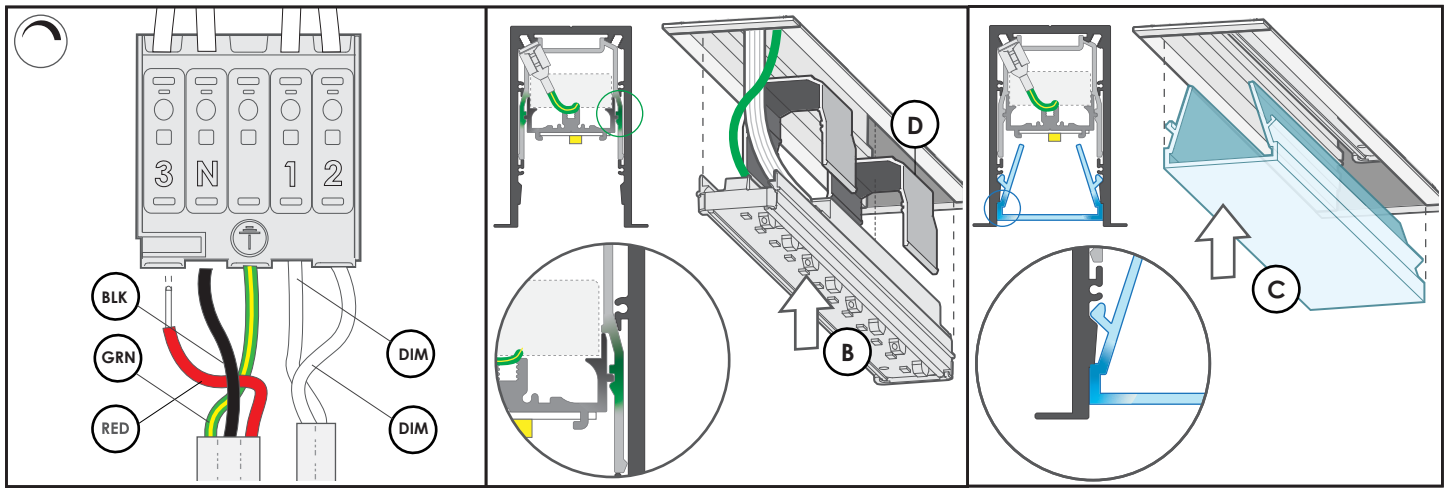
6.
Feed the Power Cable through the
pierced *IP Grommet(G)* & insert
Mainbody(A) into the cut out.



7.
With a Screwdriver; screw the bolt in
Spring Clips(H) to suspend the light
fixture.

8.
Insert Earth spade into terminal of
Mainbody(A).

9A. IF NON DIM
Wire primary wires into terminal.



9B. IF DIM

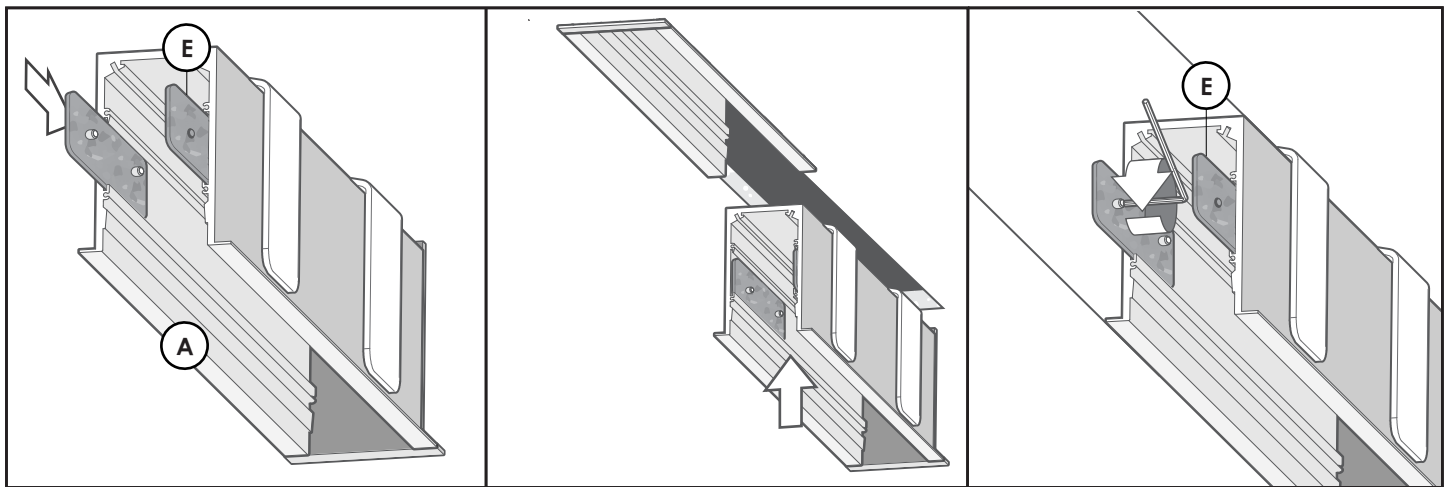
Wire primary wires into terminal.
Wire dimming wires into terminal.

10.

Install *Light Tray(B)* by inserting into *Light Tray Clips(D)*. Centre to ensure homogenous illumination.

11.

Install *Lens(C)* by inserting into *Mainbody(A)* clipping detail.



12. IF MULTIPLE BODIES

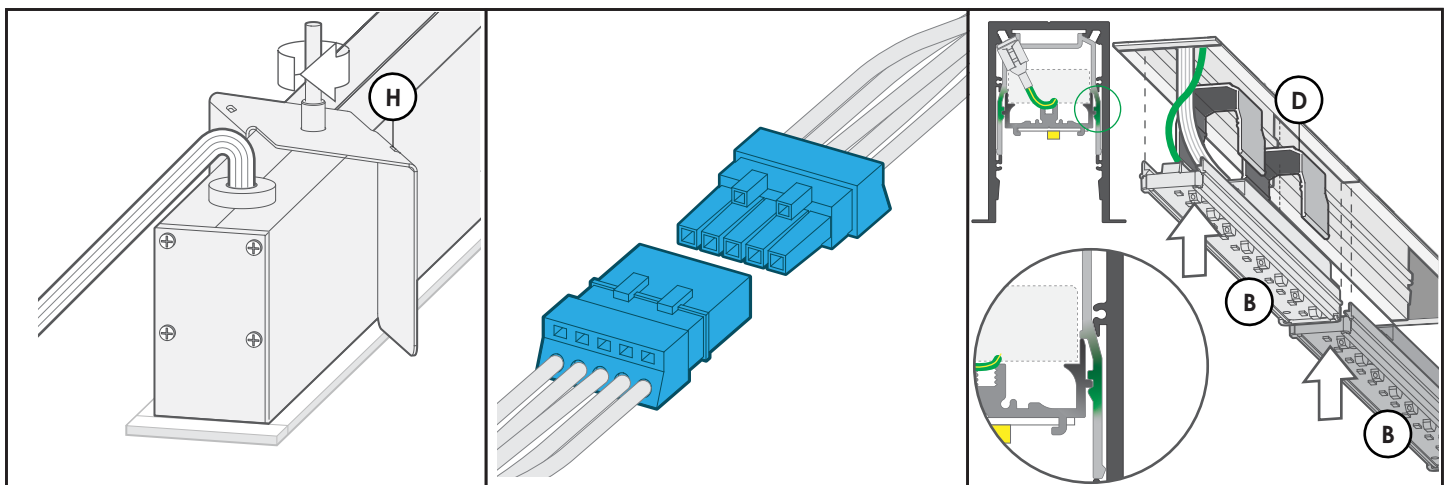
Slide *Linear Connectors(E)* into the sliding detail of the *Mainbody(A)*.

13.

Replicate stage 1-11 by installing first *Mainbody(A)*. Insert second *Mainbody(A)*.

14.

Slide *Linear Connectors(E)* between join. Tighten all grub screws to lock *Linear Connectors(E)* in place.



15.

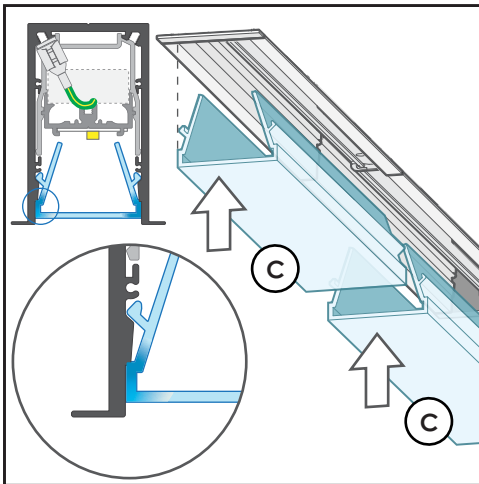
With a Screwdriver; screw the bolt in *Spring Clips(H)* to suspend the light fixture.

16.

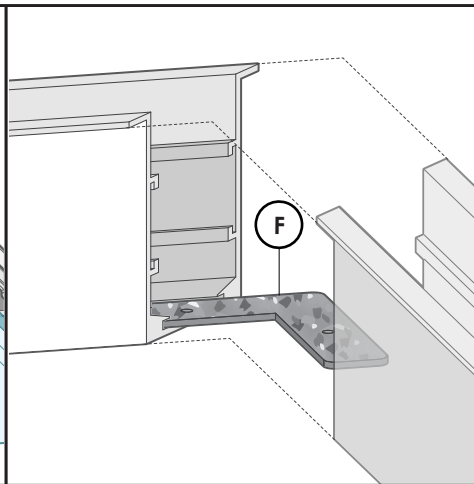
Connect the appropriate plugs.

17.

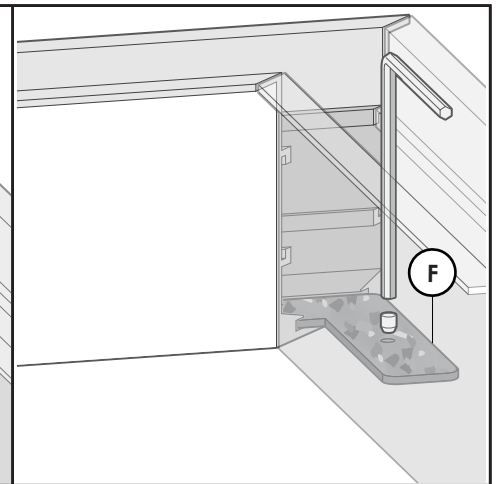
Install *Light Tray(B)* by inserting into *Light Tray Clips(D)*. Centre to ensure homogenous illumination.



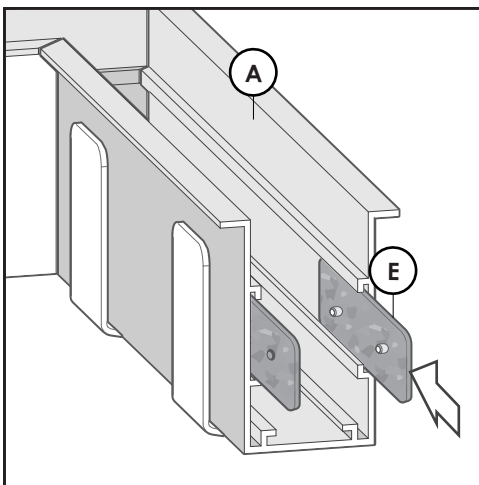
18.
Install Lens(C) by inserting into Mainbody(A) clipping detail.



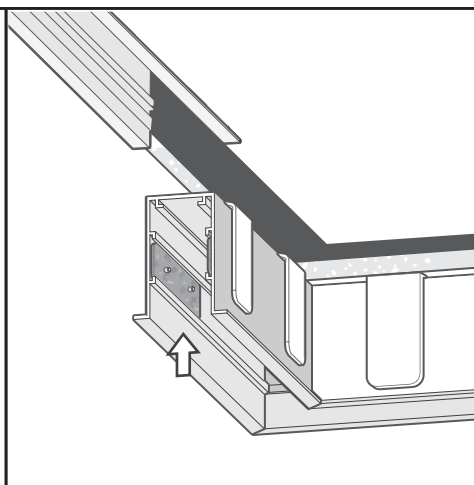
19. IF MITERED
Replicate stage 1-11 by installing first Mainbody(A). Slide Mitre Bracket(F) into sliding detail of mitered Mainbodies(A).



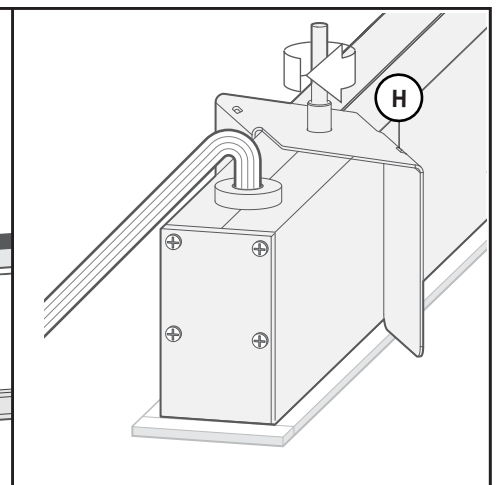
20.
Push Mitered Mainbodies(A) together and & fix grubscrew of Mitre Bracket(F).



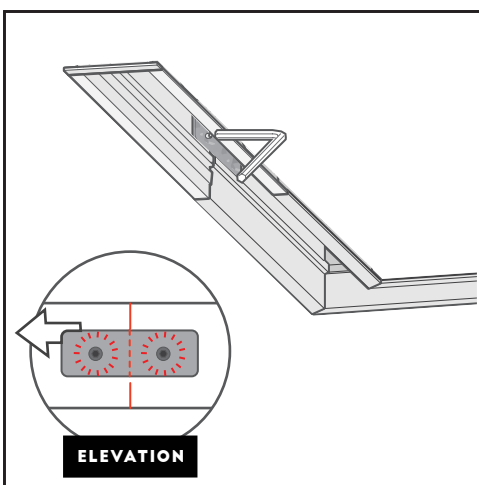
21. IF MITERED SYSTEM
Slide Linear Connectors(E) into the sliding detail of the Mainbody(A).



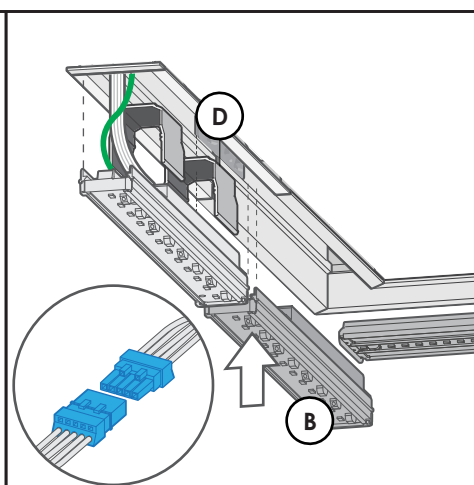
22.
Insert Mitered Mainbody(A) into the cut out.



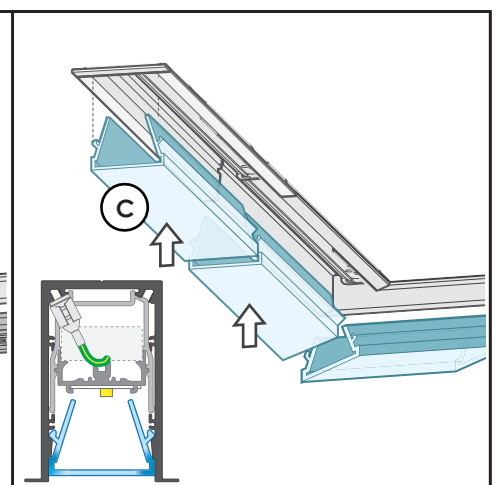
23.
With a Screwdriver; screw the bolt in Spring Clips(H) to suspend the light fixture.



24.
Slide linear connector between join. Tighten all grub screws to lock Linear Connectors(E) in place.



25.
Connect appropriate plugs. Install Light Tray(B) by inserting into Light Tray Clips(D). Centre to ensure homogenous illumination.



26.
Install Lens(C) by inserting into Mainbody(A) clipping detail.