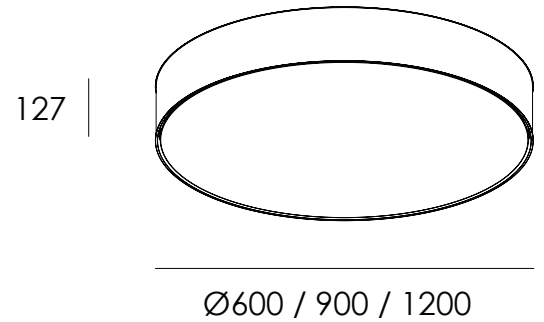
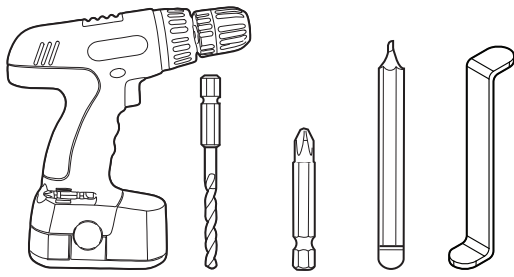


INSTALLATION: Ensure that products are mounted with supplied, recommended or appropriate screws and fixings to suit the mounting surface.

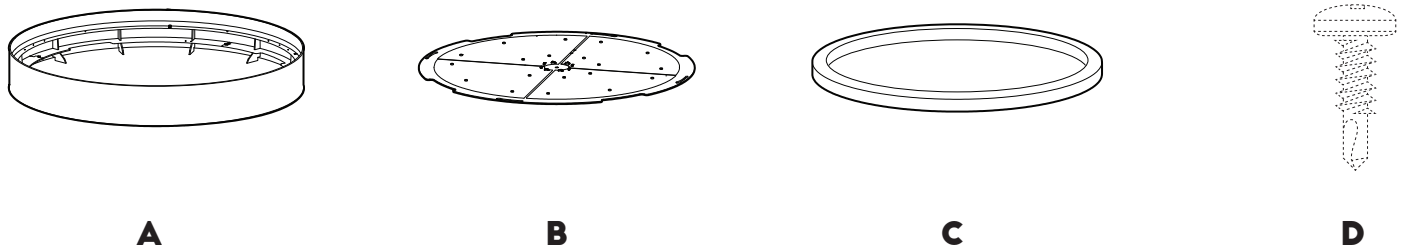
WARNING: Installation is only to be carried out by suitably qualified persons in accordance with installation instructions and all applicable regulations or standards. (Improper installation can create an electrical hazard with risk of electric shock, fire or injury). Darkon will not be held responsible for any consequences arising from improper product handling, storage or installation.

TOOLS REQUIRED:

POWER DRILL / DRILL BIT / DRILL DRIVER / PENCIL / LENS TOOL



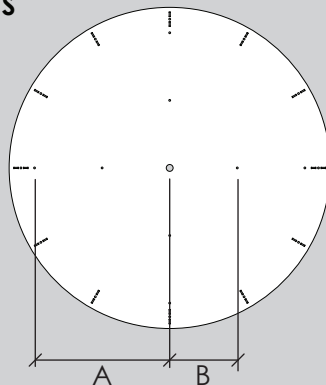
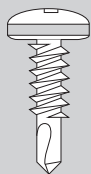
COMPONENTS:



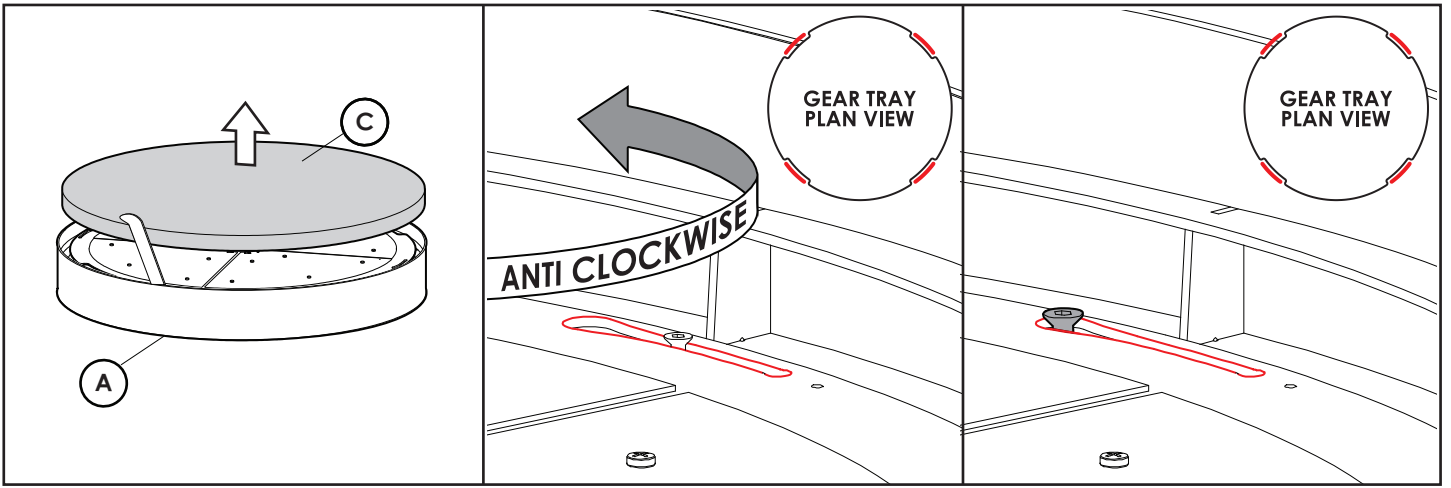
MINIMUM AREA REQUIREMENTS

FIGURE 1.

Ø5 MM MOUNTING HOLES
PLACED EVENLY AROUND
A CIRCULAR ARRAY
SPACING SIZE SPECIFIC



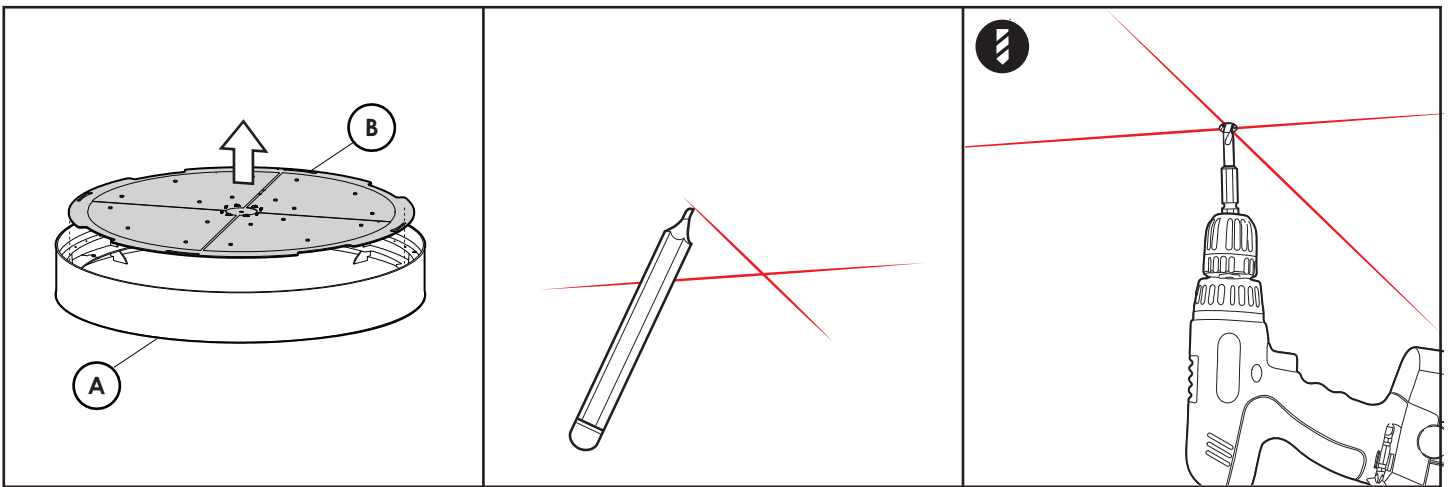
	DIMENSION (A)	DIMENSION (B)
Ø600	-	187.5MM
Ø900	375MM	187.5MM
Ø1200	500MM	250MM



1.
-Using lens tool, lever lens(C) out of mainbody(A).

2.
-Rotate Gear Tray (B) anti clockwise. Use cut out as handle (see plan inset).

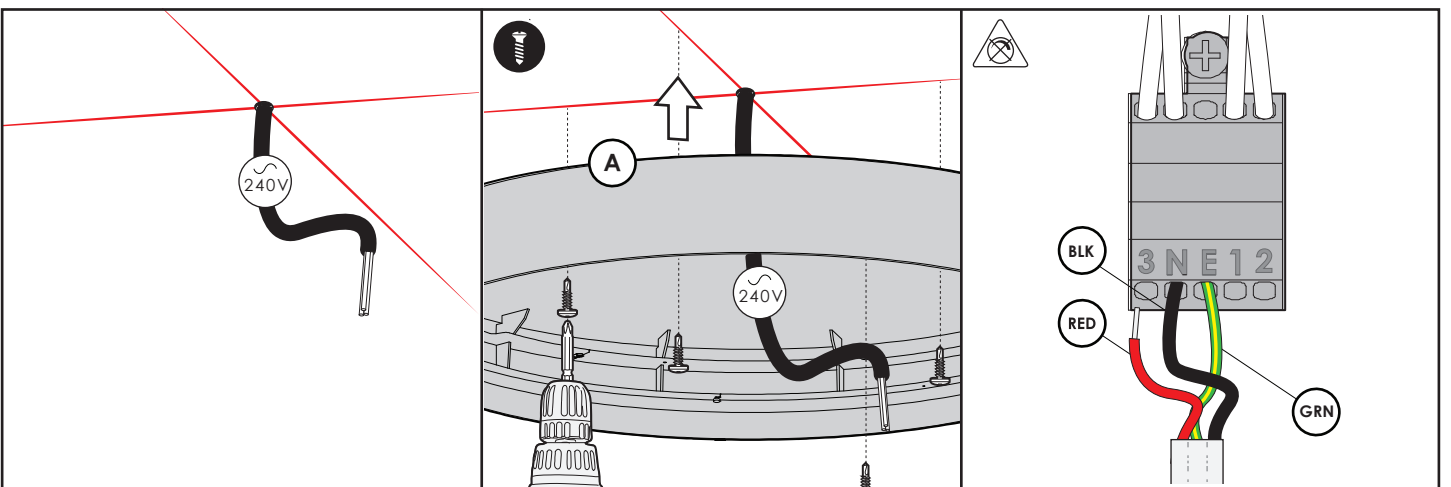
3.
-Ensure all screw heads are slotted within opening of keyhole.



4.
-Lift and remove Gear Tray(B).

5.
-Using appropriate measuring tools, mark out placement & location of luminaire (see figure one for mounting hole locations).

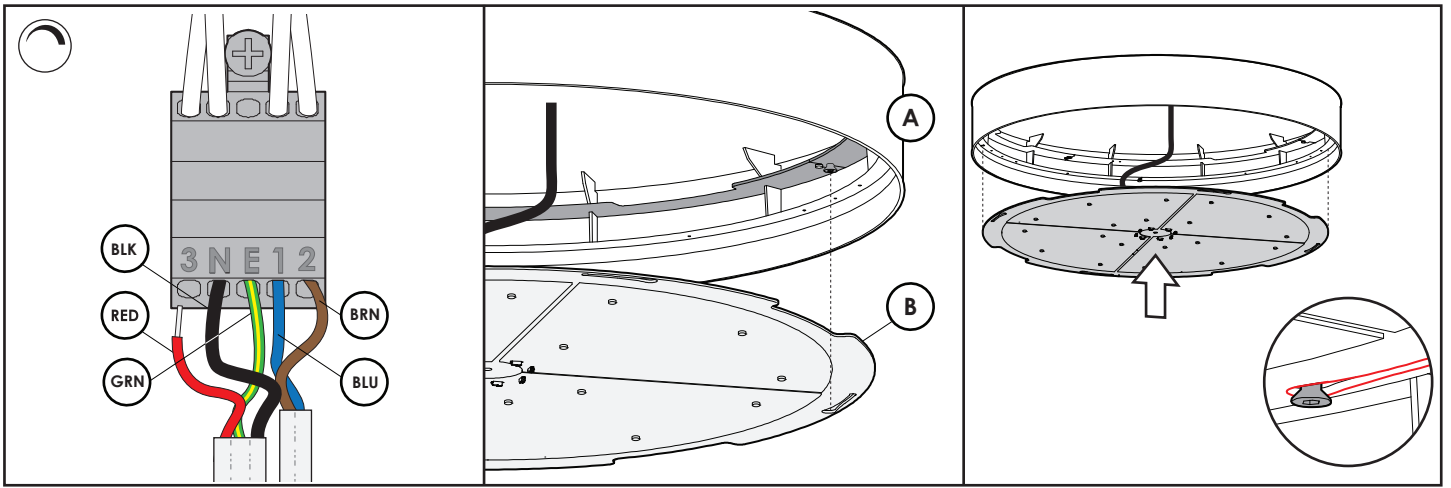
6.
-Drill all necessary holes with an appropriate drill bit.



7.
-Pull mains(240V) from ceiling.

8.
-Fasten appropriate mounting screws(D) to the desired surface(screws not supplied).

9A. IF NON DIM
-Wire primary wires into terminal.



9B. IF DIM

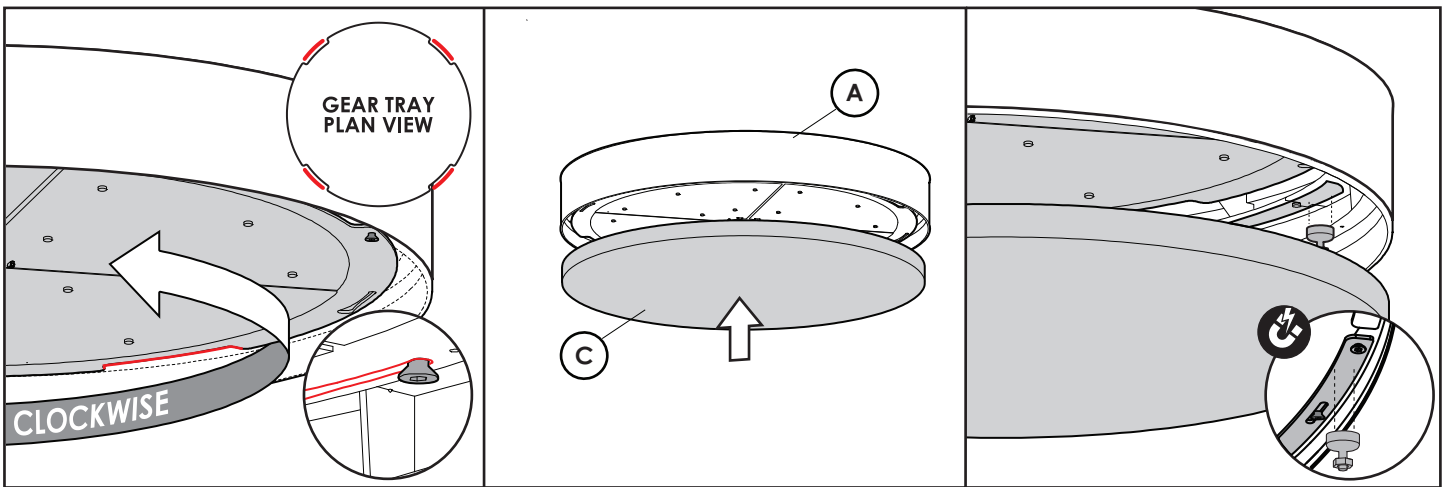
- Wire primary wires into terminal.
- Wire dimming wires into terminal.

10.

- Insert Gear Tray(B) into the gear mount(A).

11.

- Ensure all fastener heads are slotted within the opening of keyhole detail.



12.

- Rotate Gear Tray(B) clockwise. Use cut out as handle (see plan inset).

13.

- Insert Lens(C) into Mainbody(A).

14.

- Ensure all magnets connect to the gal plate (see inset).