

HIP TRIM MK2

RECESSED PROFILE

DARKON™
THE EDGE OF LIGHT

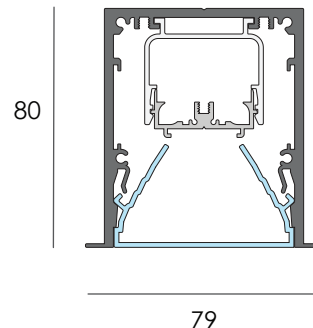
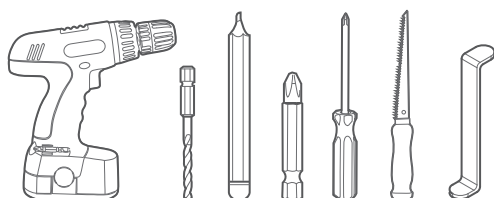
Ensure that products are mounted with supplied, recommended or appropriate screws and fixings to suit the mounting surface.

WARNING

INSTALLATION IS ONLY TO BE CARRIED OUT BY SUITABLY QUALIFIED PERSONS IN ACCORDANCE WITH INSTALLATION INSTRUCTIONS AND ALL APPLICABLE REGULATIONS OR STANDARDS. (IMPROPER INSTALLATION CAN CREATE AN ELECTRICAL HAZARD WITH RISK OF ELECTRIC SHOCK, FIRE OR INJURY). DARKON WILL NOT BE HELD RESPONSIBLE FOR ANY CONSEQUENCES ARISING FROM IMPROPER PRODUCT HANDLING, STORAGE OR INSTALLATION.

TOOLS REQUIRED

POWER DRILL / DRILL BIT / PHILLIPS DRIVER / PENCIL / SCREWDRIVER
WALLBOARD SAW / LENS REMOVAL TOOL



MAINTENANCE

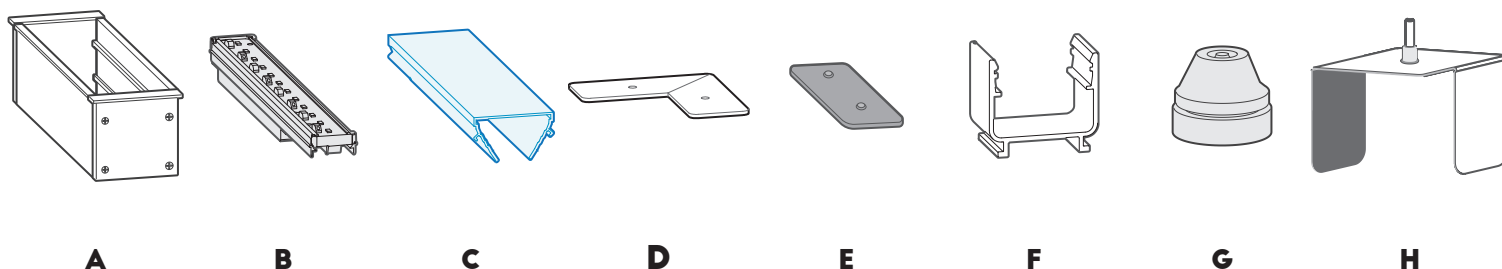


Wipe product with a clean dry microfiber cloth.
Do not use any cleaning products/ chemicals to clean product.

SERVICING

-Lens can be removed w/ suction cups or lens removal tool.
-'Light Tray' can be replaced if deemed faulty

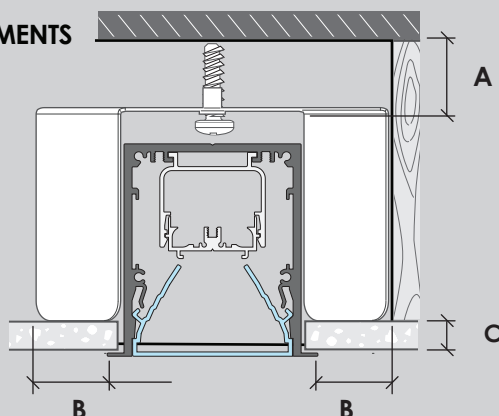
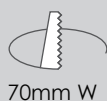
COMPONENTS



MINIMUM AREA REQUIREMENTS

FIGURE 1.
FOR OPTIMAL LONGEVITY,
ENSURE UNRESTRICTED AIRFLOW
OVER LUMINAIRE
DO NOT COVER W/ INSULATION

CUT OUT



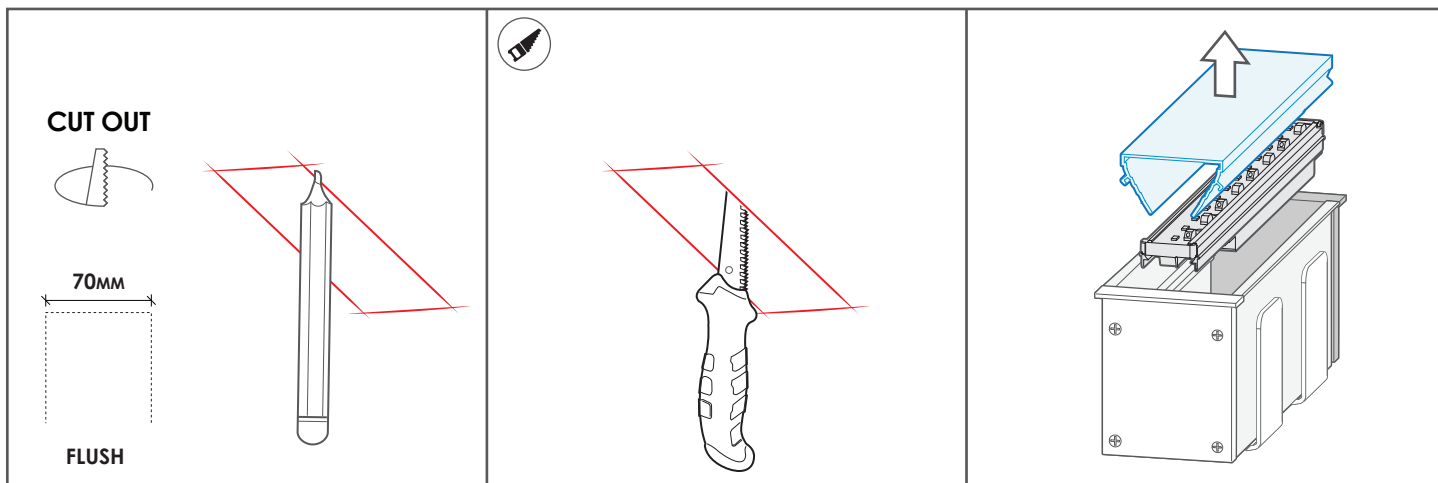
	DISTANCE	DESCRIPTION
A)	40MM	CLEARANCE FOR TOP OF LUMINAIRE
B)	40MM	CLEARANCE B/W STRUCTURAL MEMBER
C)	20MM	MAXIMUM WALL BOARD THICKNESS

IP22



23.06.21

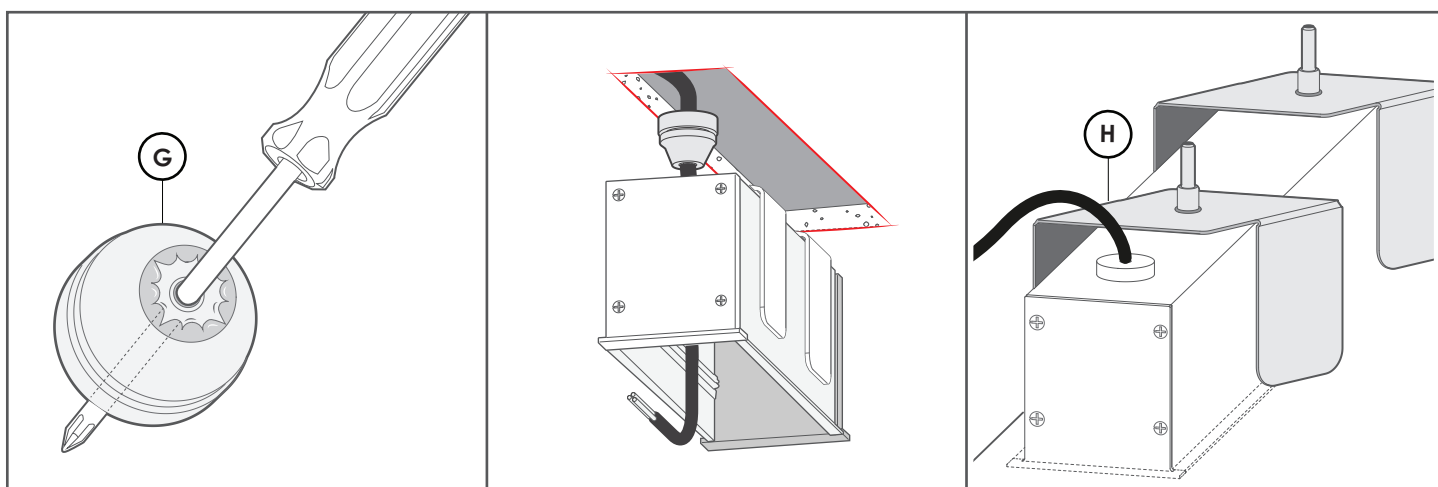
PAGE: 1/3



1.
Measure and mark the appropriate cut out for where the fitting is to be installed.

2.
Make the cut-out using a Wallboard Saw(or appropriate tool).

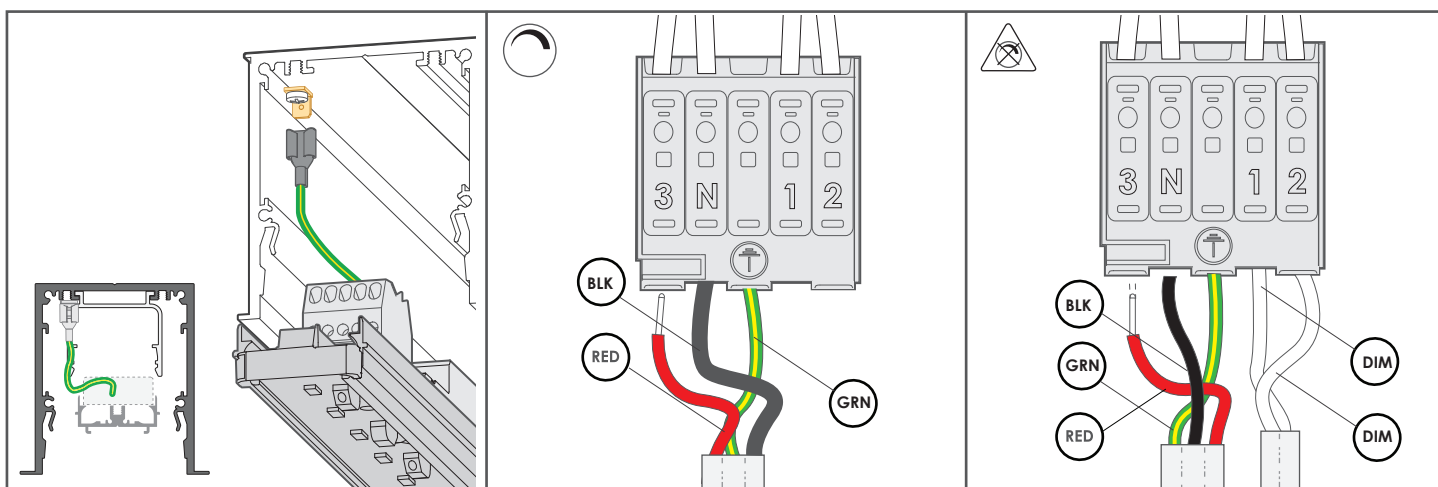
3.
Use lens removal tool to lever Lens(C) out of clipping detail, Light Tray(B) out of Clips.



4.
Pierce the IP Grommet(G) with the tip of a screw driver.

5.
Feed the Power Cable through the pierced IP Grommet & insert the mainbody into the cut out.

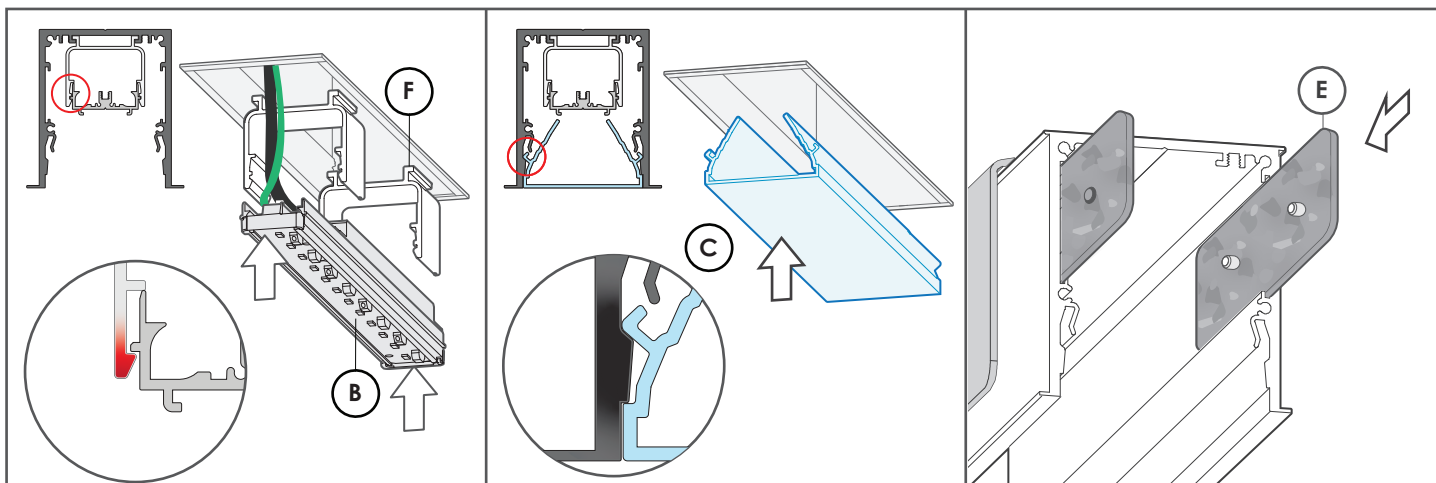
6.
With a Screwdriver; screw the bolt in order to re-orientate the Spring Clip(H) to suspend the light fixture.



7.
Bolt Earth lug to recessbody(A).

8A. IF NON DIM
Wire primary wires into terminal.

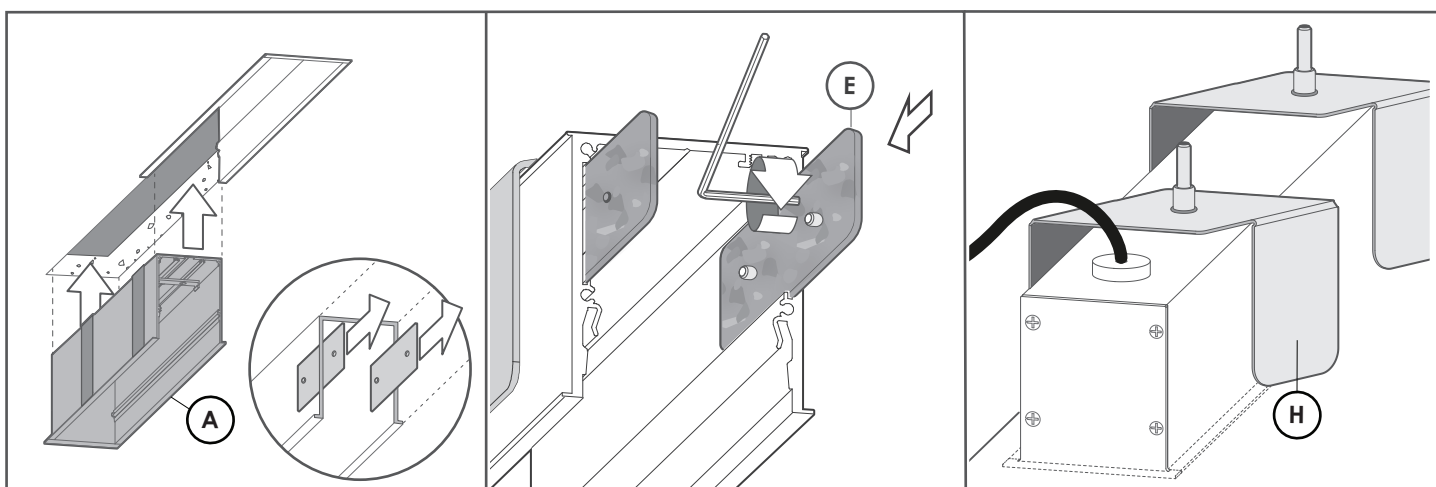
8B. IF DIM
Wire primary wires into terminal.
Wire Dimming wires into terminal.



9.
Install Light Tray into clips(F)

10.
Install Lens (C) by inserting into clipping detail.

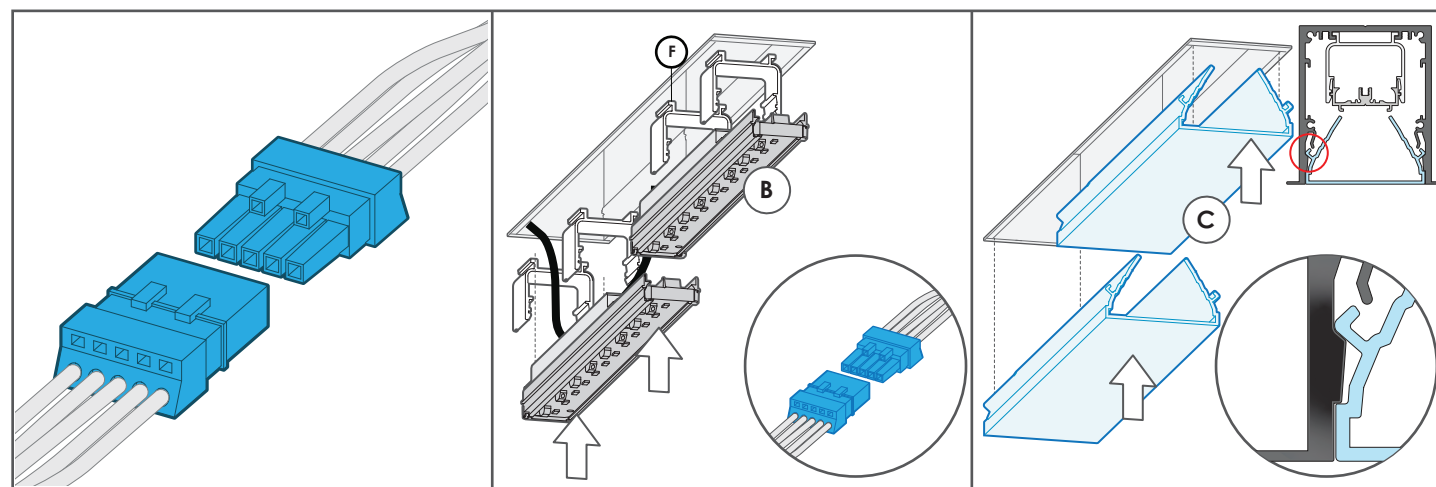
11. IF MULTIPLE BODIES
Replicate stage 1-10 by installing first recessed body.



12. IF MULTIPLE BODIES
Insert second recess body. Slide linear connectors into the sliding detail of the recessbody(A). Ensure connector is overlapping joint.

13.
Tighten all grub screws to lock linear connectors(E) in place with 3mm allen key.

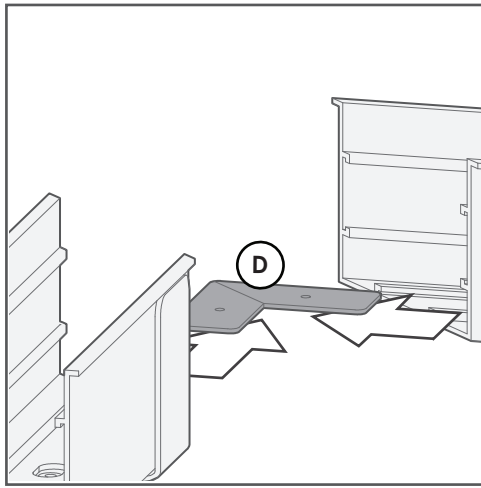
14.
With a Screwdriver; screw the bolt in order to re-orientate the Spring Clip(H) to suspend the light fixture.



15.
-Connect the appropriate plugs.

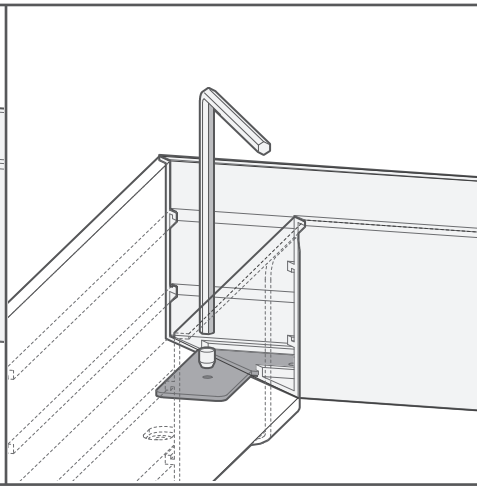
16.
Install Light Tray(B) by inserting into light tray clips(F). Centre light trays to ensure homogenous illumination.

17.
Install Lens (C) by inserting into recessbody(A) clipping detail.

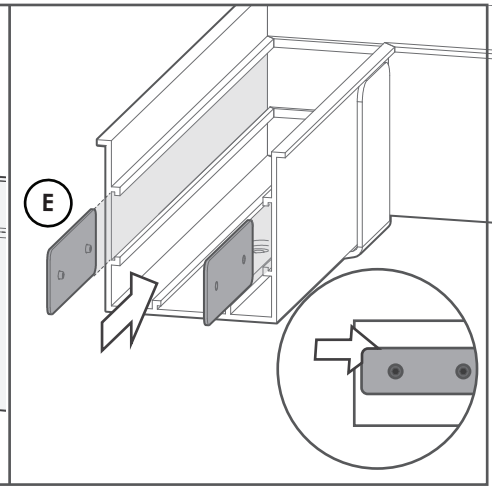


18. IF MITRED CORNER

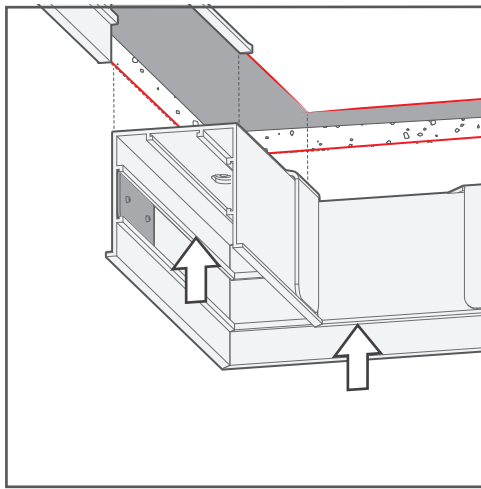
Replicate stage 1-11 by installing first recessed body. Slide mitre bracket(D) into sliding detail of mitred bodies(A)



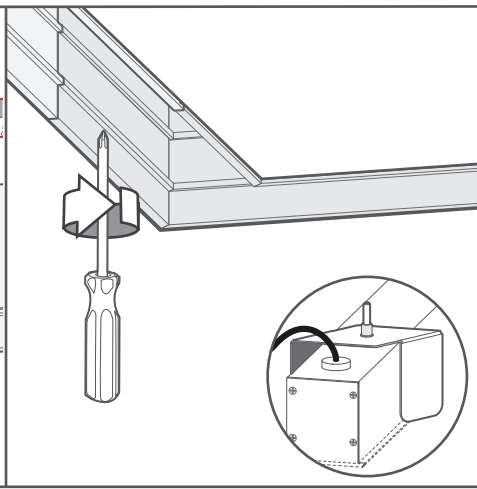
19.-Slide linear connectors into the sliding detail of the recessbody(A).



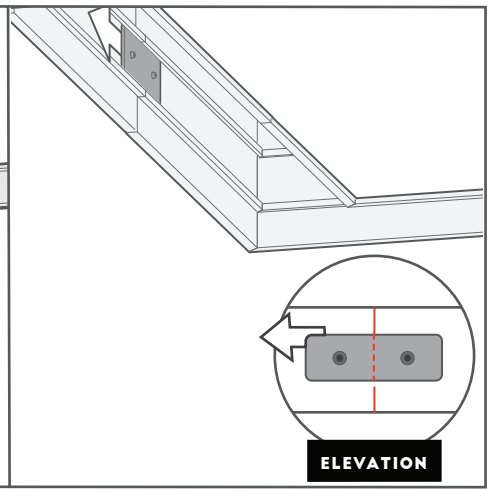
20. Insert mitered mainbody into the cut out.



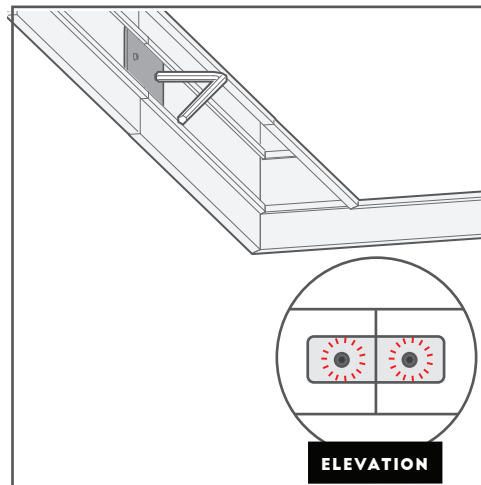
21. Insert mitered mainbody into the cut out. Slide linear connectors into the sliding detail of the recessbody(A).



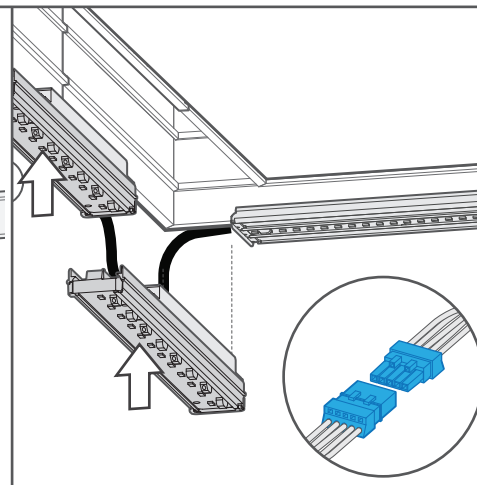
22. With a Screwdriver; screw the bolt in order to re-orientate the Spring Clip(H) to suspend the light fixture.



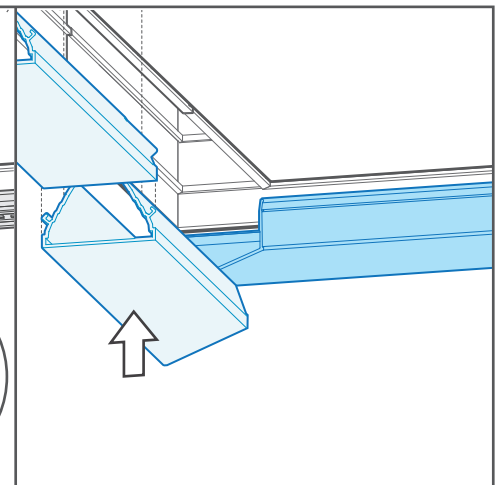
23. Ensure connector is overlapping join.



24. Tighten all grub screws to lock linear connectors(E) in place with 3mm allen key.



25. Install Light Tray(B) by inserting into light tray clips(F) & connect plugs. Centre light trays to ensure homogenous illumination.



26. Install Lens (C) by inserting into recessbody(A) clipping detail.