

DEEP DOWN SM RT^{MK2}

SURFACED MOUNTED

DARKON™
THE EDGE OF LIGHT

INSTALLATION

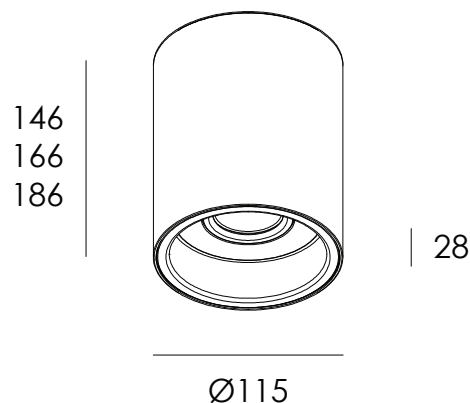
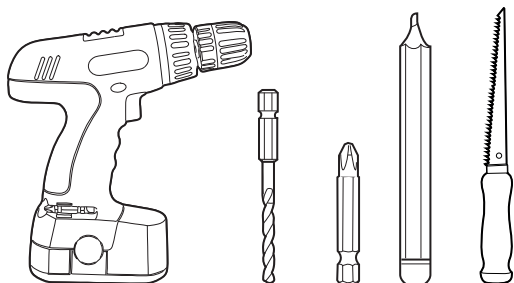
Ensure that products are mounted with supplied, recommended or appropriate screws and fixings to suit the mounting surface.

WARNING

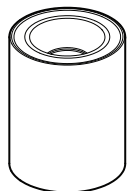
Installation is only to be carried out by suitably qualified persons in accordance with installation instructions and all applicable regulations or standards. (Improper installation can create an electrical hazard with risk of electric shock, fire or injury). Darkon will not be held responsible for any consequences arising from improper product handling, storage or installation.

TOOLS REQUIRED

Power drill / Drill bit / Philips driver / Pencil / Wallboard Saw



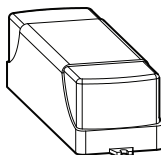
COMPONENTS



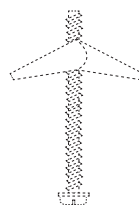
A XI



B XI



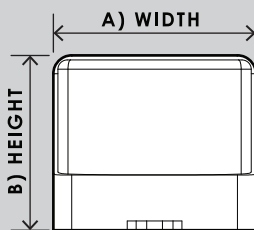
C XI



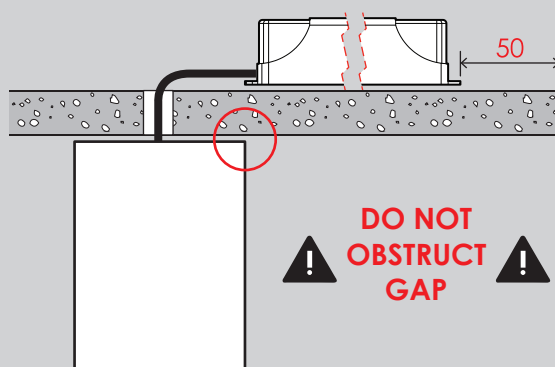
D (NOT SUPPLIED)

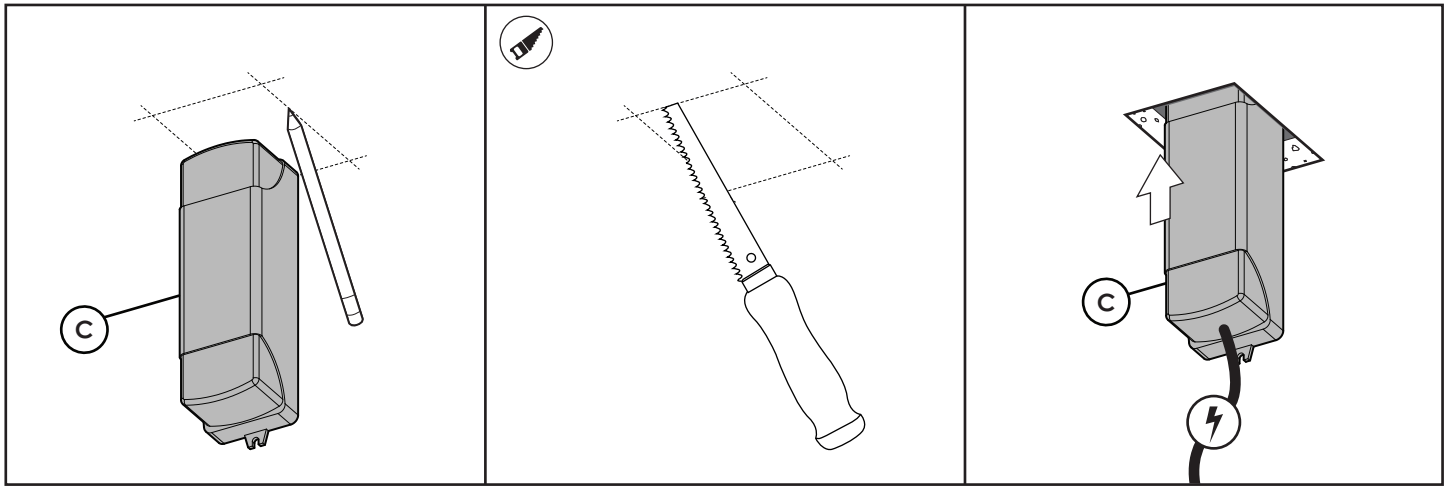
DRIVER CUTOUT

		A	B
NON DIM		55mm	35mm
DALI DIM		45mm	35mm
PHASE CUT		55mm	35mm

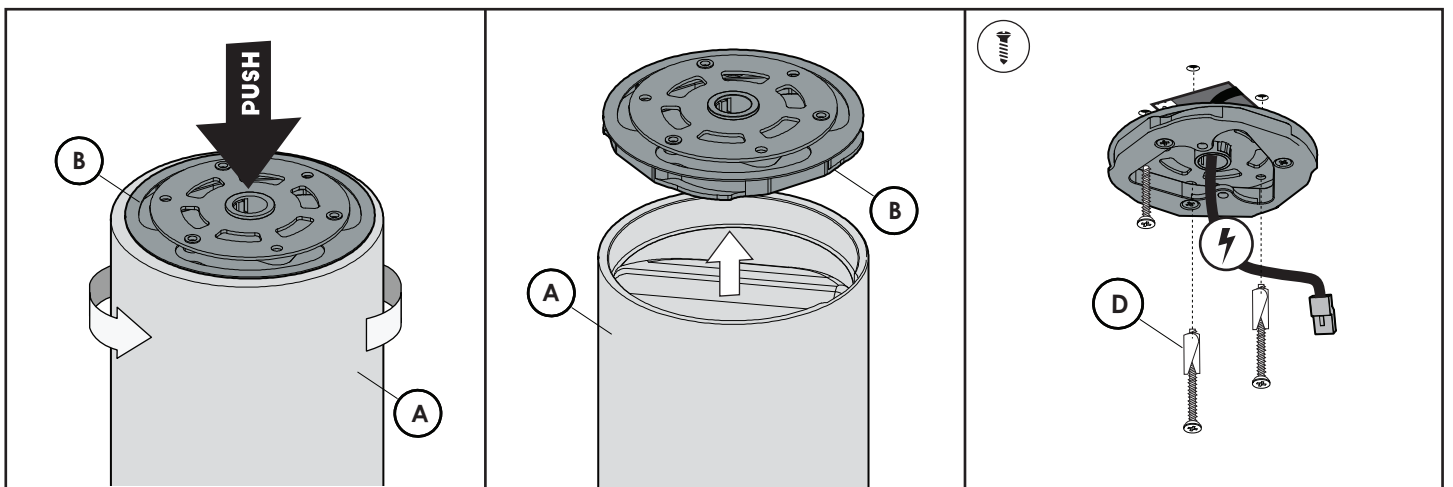


MINIMUM AREA REQUIREMENT

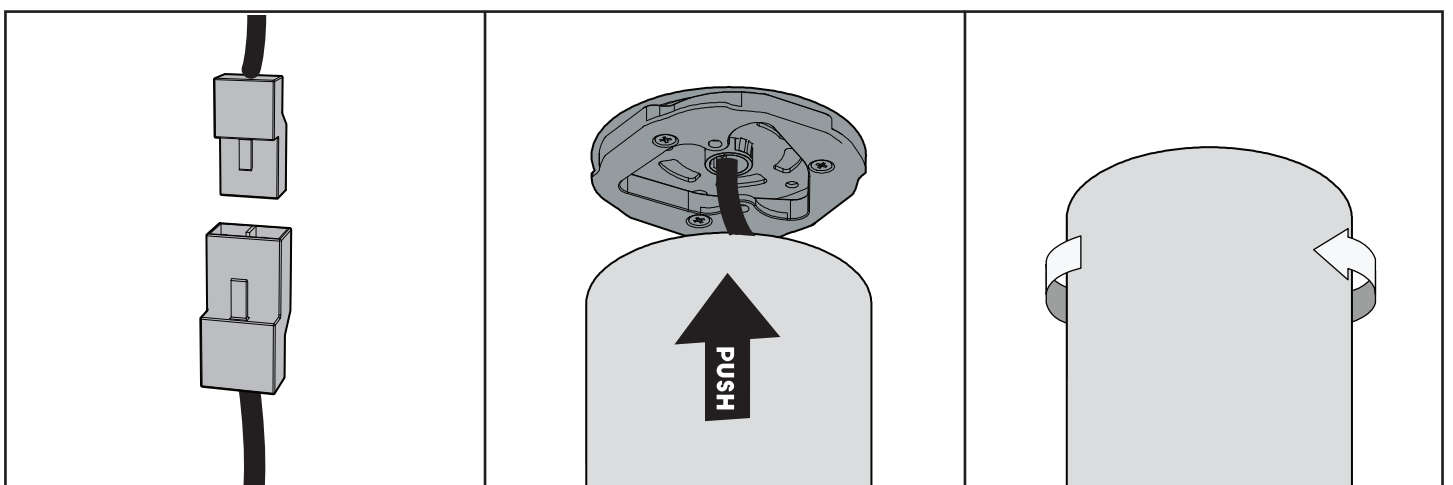




1. With a pencil, mark out the projected hole cut out for the driver (see page 1)
2. Using a wallboard saw, cut out the necessary hole for the driver.
3. Insert driver into cutout, leave secondary wire exposed.



4. -Push down on the mounting disk(B)
5. -Remove mounting disk by rotating anti clockwise whilst being pushed down.
6. -Thread power cable (240v) through mounting disk and install with appropriate fasteners.



7. -Connect downlight engines to driver.
8. -Insert and push Tube mainbody(A) into mounting disk(B).
9. -Rotate Tube mainbody(A) to engage bayonet mechanism.