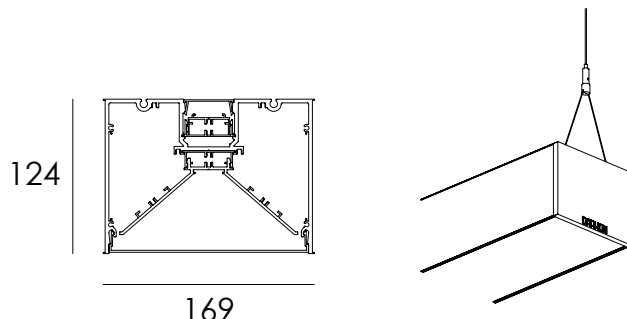


Ensure that products are mounted with supplied, recommended or appropriate screws and fixings to suit the mounting surface.

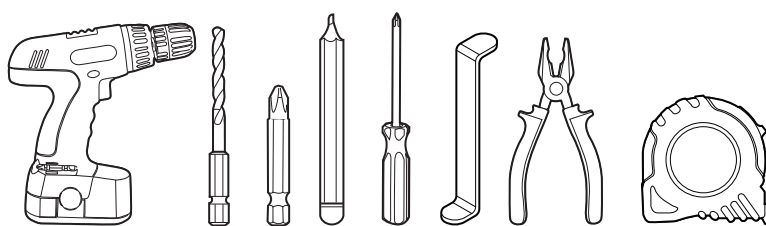
WARNING

INSTALLATION IS ONLY TO BE CARRIED OUT BY SUITABLY QUALIFIED PERSONS IN ACCORDANCE WITH INSTALLATION INSTRUCTIONS AND ALL APPLICABLE REGULATIONS OR STANDARDS. (IMPROPER INSTALLATION CAN CREATE AN ELECTRICAL HAZARD WITH RISK OF ELECTRIC SHOCK, FIRE OR INJURY). DARKON WILL NOT BE HELD RESPONSIBLE FOR ANY CONSEQUENCES ARISING FROM IMPROPER PRODUCT HANDLING, STORAGE OR INSTALLATION.



TOOLS REQUIRED

POWER DRILL / DRILL BIT / PHILLIPS DRIVER / PENCIL / SCREWDRIVER
LENS REMOVAL TOOL / PLIERS / TAPE MEASURE.

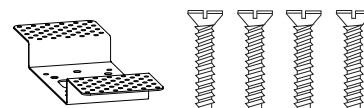


NOTE

- Lengths that exceed 2200mm are fitted with 3 suspensions adding to components G, H, I & K.
- Living Linear Connectors are needed only with multiple body light fittings(see stage 18)*.

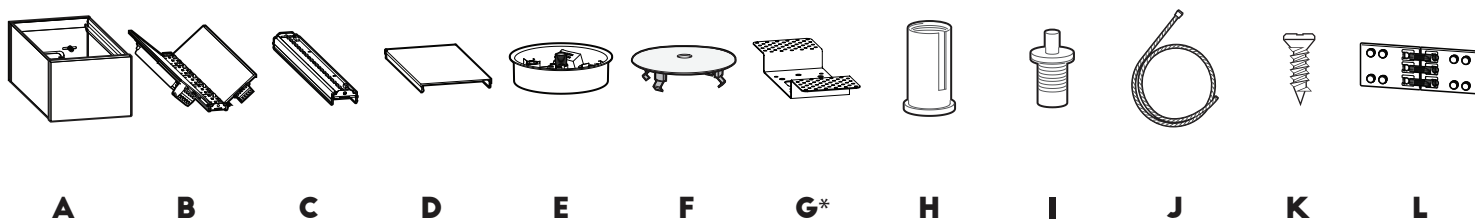
REC

CUT OUT



SUPPLIED IF REC CEILING PLATE*

COMPONENTS



DISTANCE

DESCRIPTION

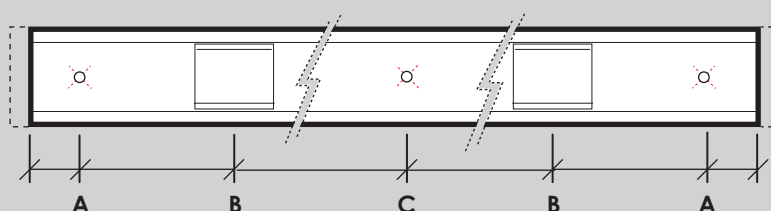
A)	15MM	SUSPENSION LOCATION
B)	150-200MM	LIGHT TRAY CLIP LOCATION (WITHIN RANGE)
C)	$\frac{\text{PROFILE LENGTH}}{2}$	IF GREATER THAN 2.2M THIRD SUSPENSION POINT IS REQUIRED

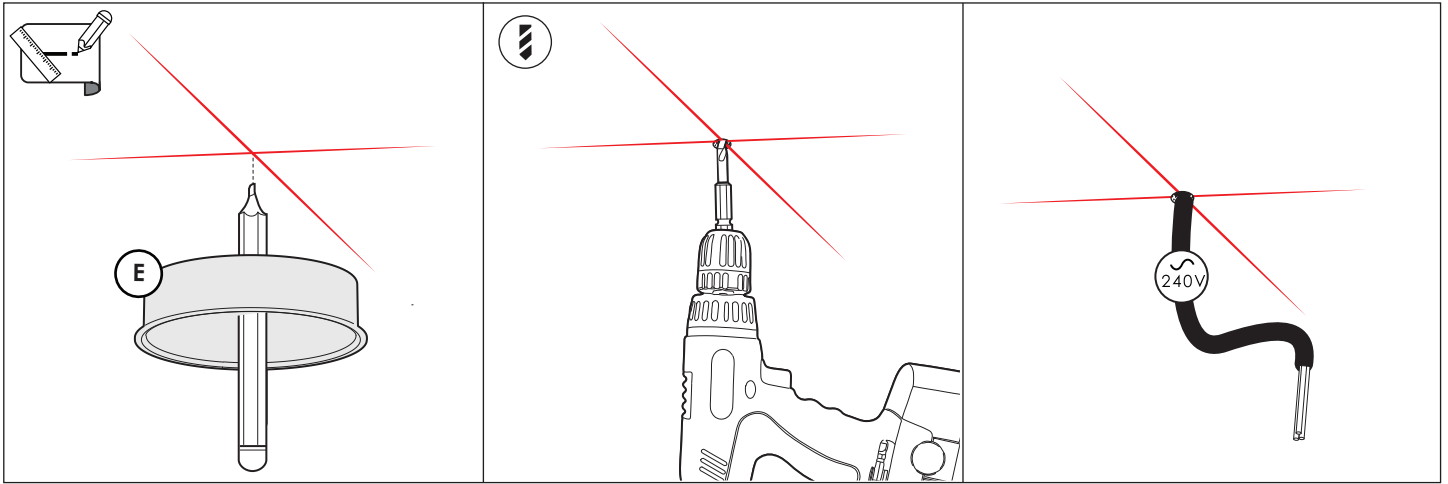


MINIMUM AREA REQUIREMENT

FIGURE 1.

Light Tray may become loose in transit - Installer to ensure Light Tray is secured prior to Installation





1A. IF SM CEILING PLATE

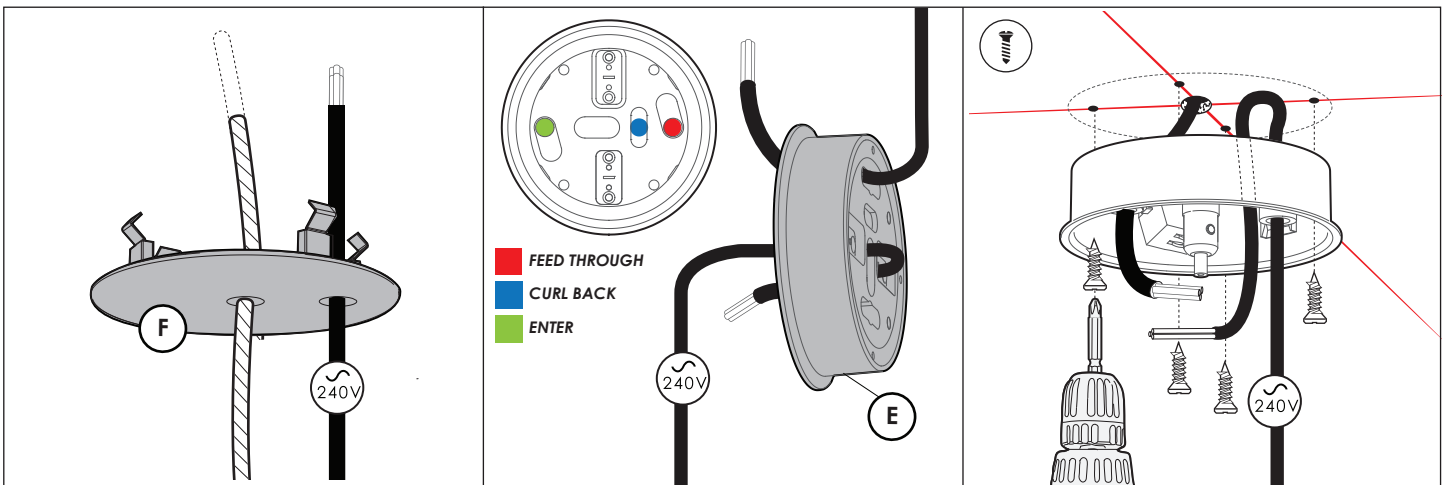
-Utilising supplied Darkon drawings, mark out the projected hole positions for the Ceiling plate(E) & suspension points.

2A.

-Drill hole for powerfeed, drill pilot holes if necessary.

3A.

-Pull powercable(240V) through ceiling



4A.

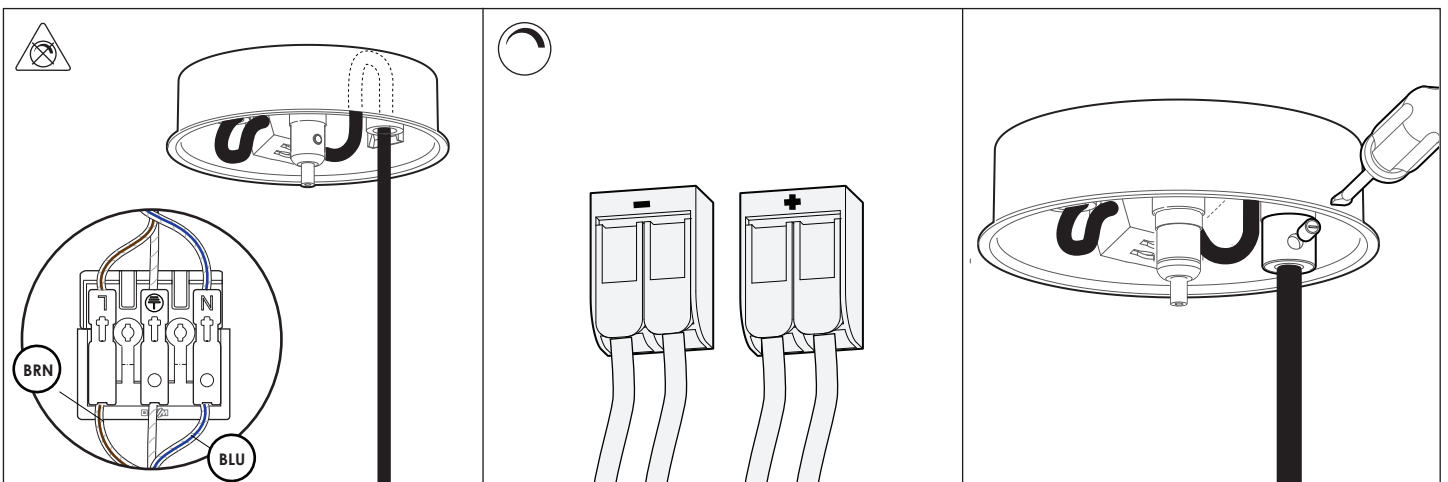
-Pull supplied powercable(240V) through ceiling plate cover(F).

5A.

-Thread supplied powercable(240V) through cable anchor & curl back into cutout. Insert pulled powercable(240V) through opposite cutout (see inset)

6A.

-Fix ceiling plate(E) with appropriate fasteners (not supplied)



7AA. IF NON DIM

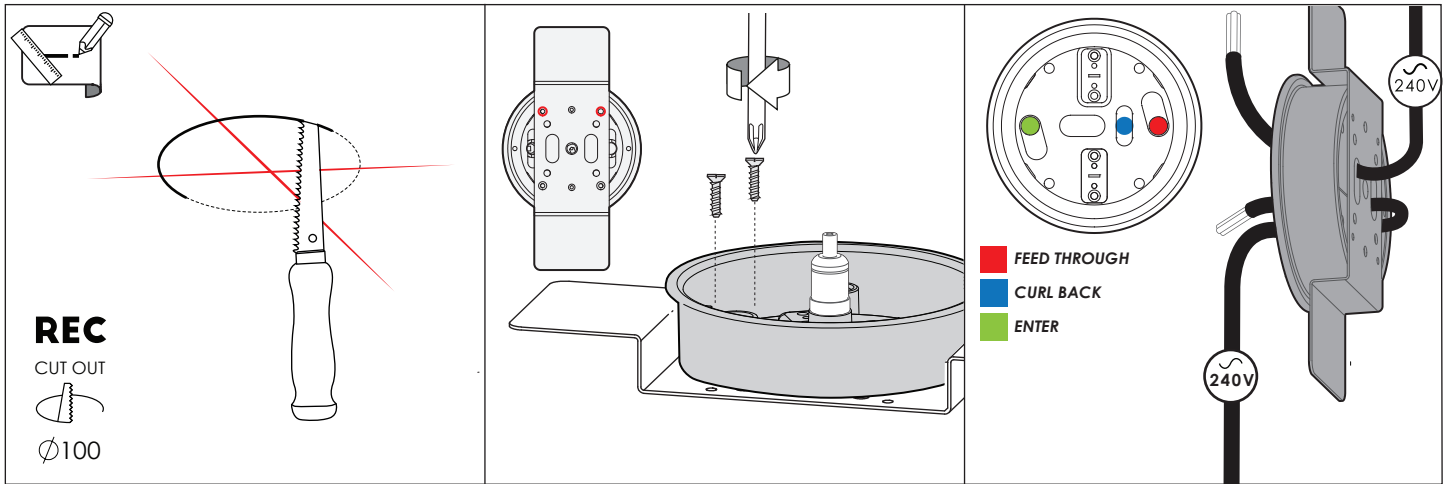
-Wire primary wires into terminal.

7AB. IF DIM

-Replicate step 7AB and connect dimming wires into wago terminal block, close.

8A.

-Fix 3mm grub screw into cable anchor with flathead driver.



1B. IF REC CEILING PLATE

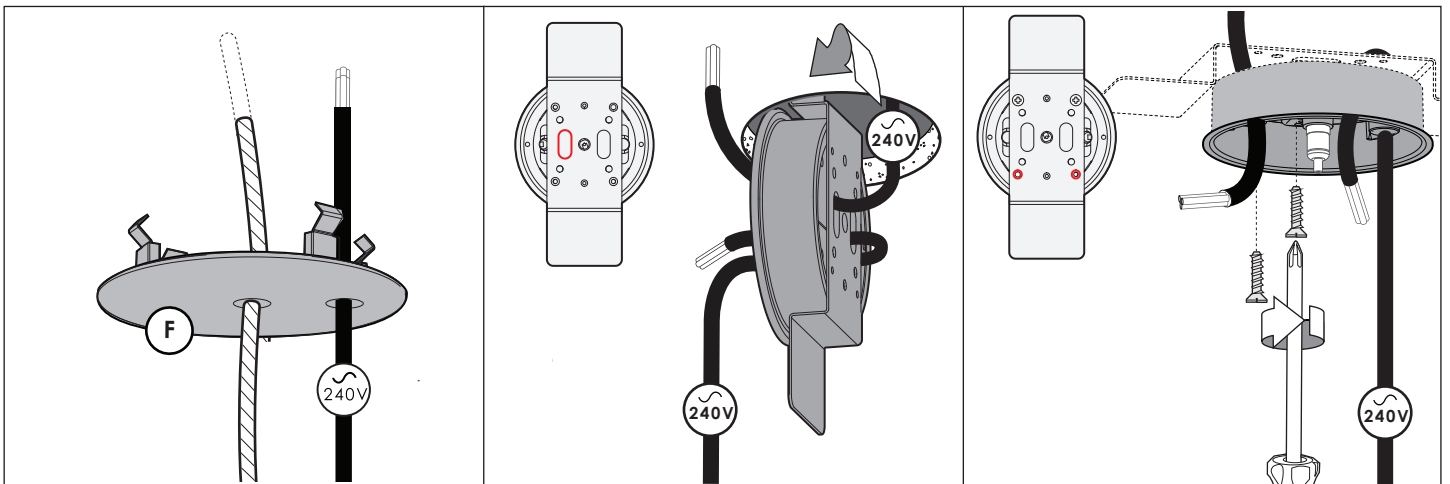
-Utilising supplied Darkon drawings, mark out the projected hole positions for the Ceiling plate(E) & suspension points.

2B.

-Align holes and install 2 of 4 bolts into one side of bracket(G).

3B.

-Thread supplied powercable (240V) through cable anchor & Bracket(G). Curl back into cutout. Insert pulled powercable(240V) through opposite cutout (see inset)



4B.

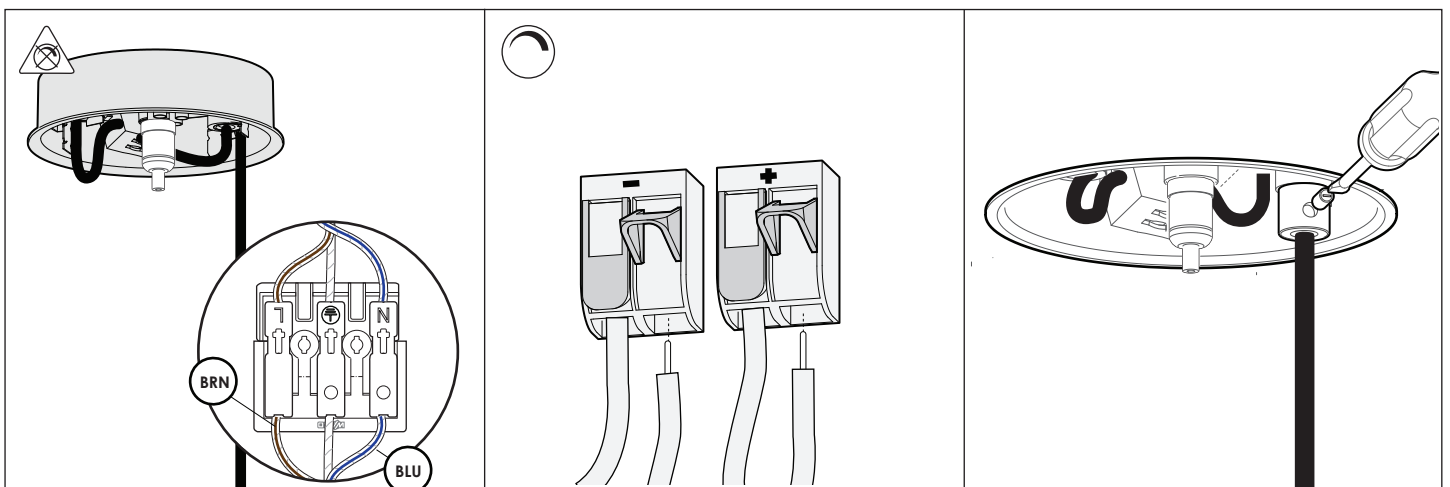
-Pull supplied powercable(240V) through ceiling plate cover(F)

5B.

-Step the fixed ceiling plate(E) & bracket(G) into the cutout.

6B.

-Fix the remaining side of the Ceiling plate(E) into bracket(G) with the remaining 2 bolts



7BA. IF NON DIM

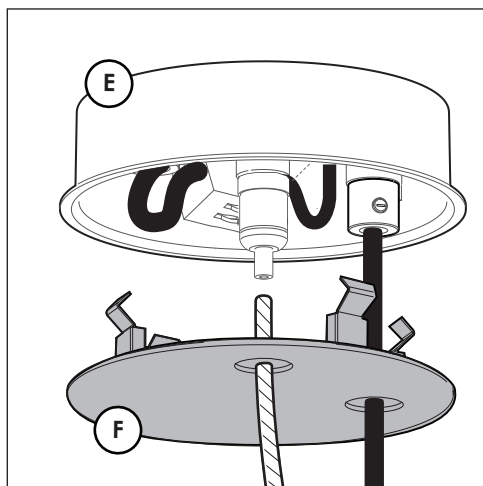
-Wire primary wires into terminal.

7BB. IF DIM

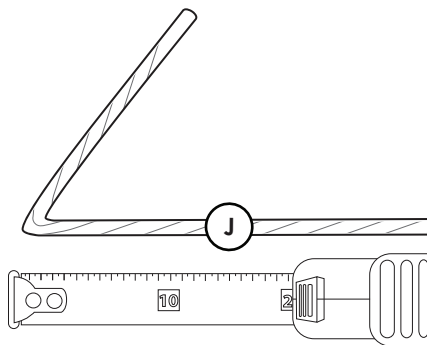
-Replicate step 7BA and connect dimming wires into wago terminal block, close.

8B.

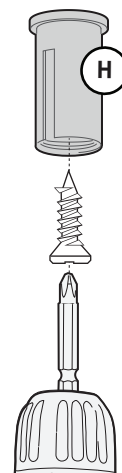
-Fix 3mm grub screw into cable anchor with flathead driver.



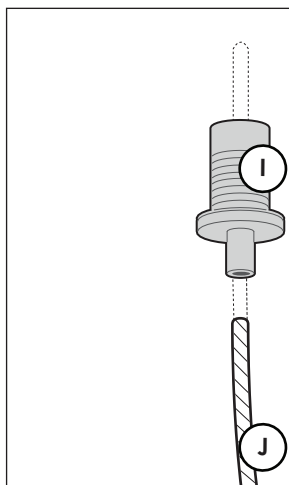
9.
-Attach cover(F) onto the Ceiling plate(E).



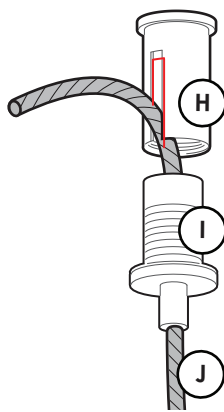
10.
-Measure desired length of the Suspension wire(J). Lightly bend and crimp to mark desired length.



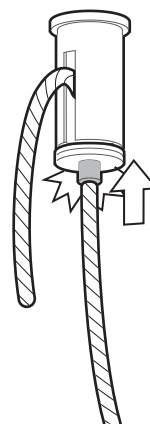
11.
-Fix the posilock(H) onto the ceiling with appropriate fasteners (not supplied).



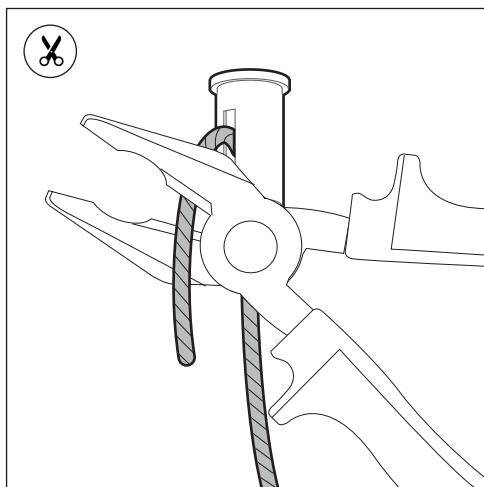
12.
-Thread the Suspension wire(J) through wire gripper(I).



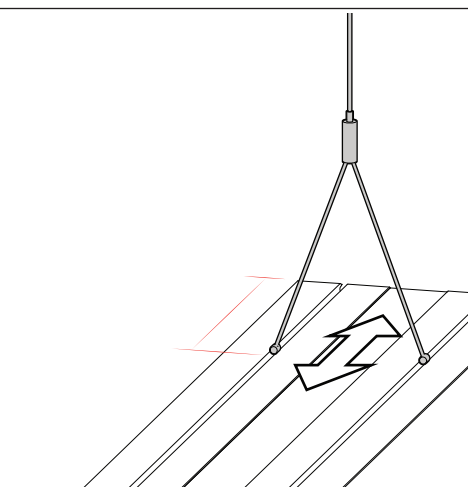
13.
-Insert excess wire(J) through slot & connect gripper(I) & posilock(H).



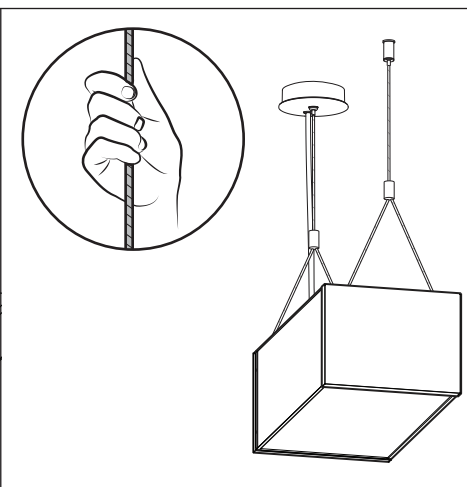
14. ADJUSTMENT
-Press sprung tip and adjust suspension wire if required.



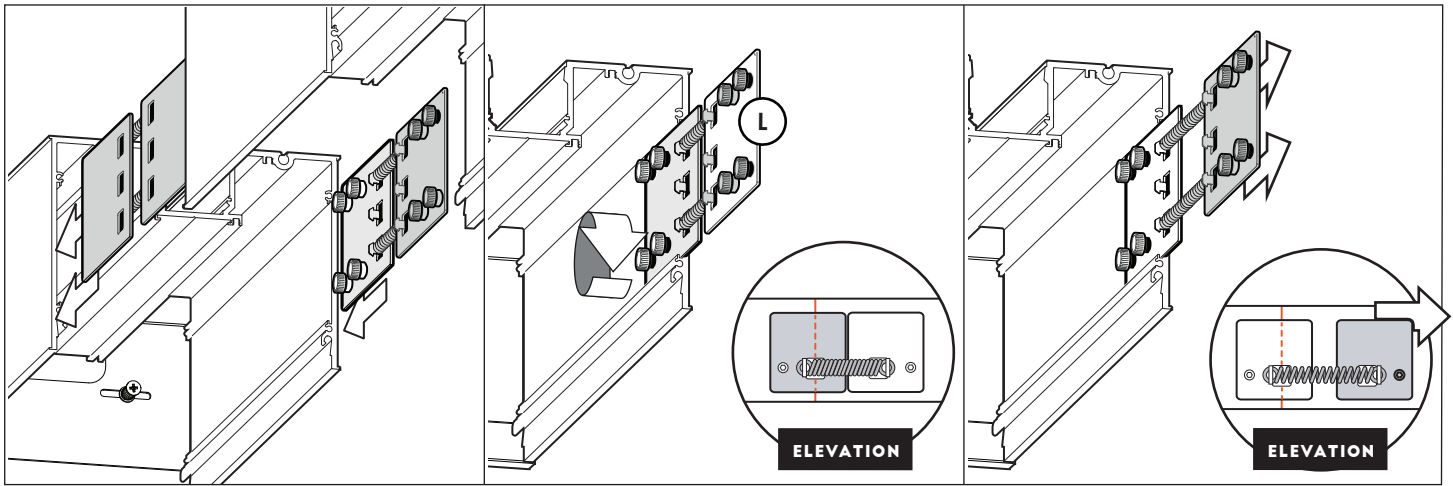
15.
-Using pliers, trim off excess suspension wire(J).



16.
-Ensure suspensions are positioned in appropriate location (see figure 1)



17.
-Ensure proper installation by slightly tugging suspension wire.



18. IF MULTIPLE BODIES

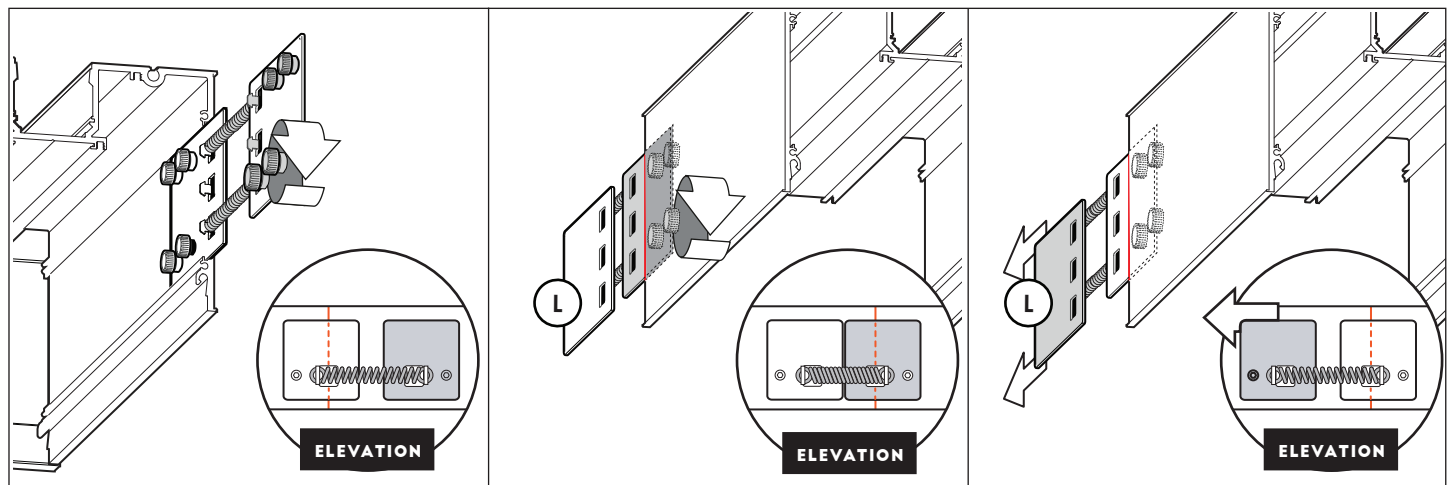
-Repeat stages 11-16 to install secondary fitting. Remove Light tray, lens & slide living linear connectors at opposite sides.

19.

-Butt up both bodies & slide 'Living linear connector' (L). Ensure left plate covers join. Tighten left thumbscrew.

20.

-Slide right plate into secondary body.



21.

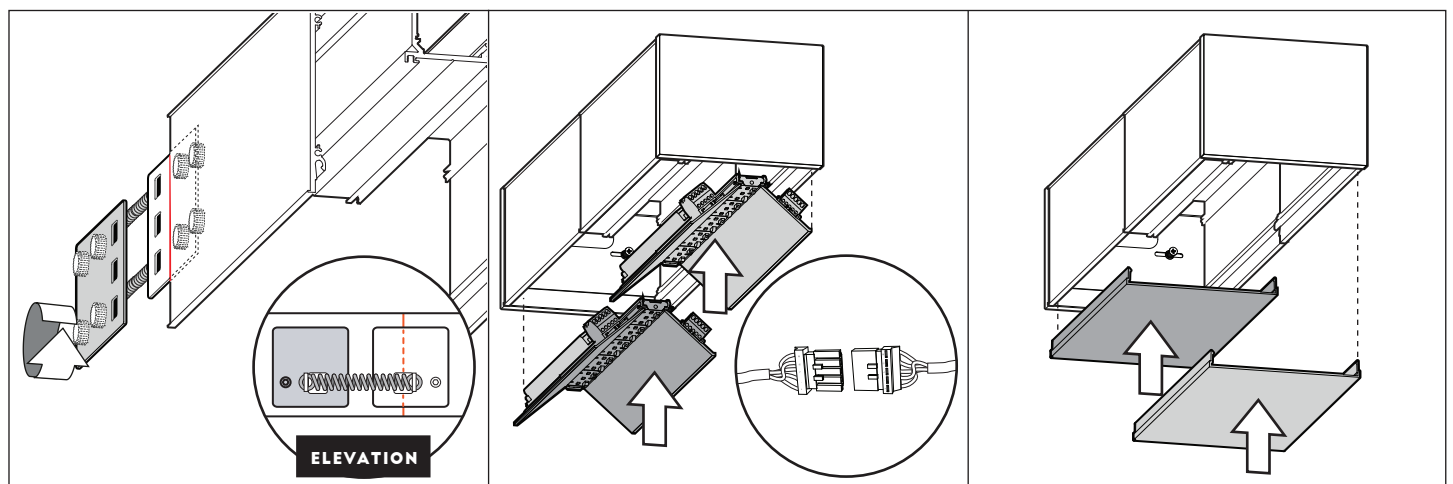
-Ensure spring is tensioned. Tighten all thumbscrews on the right plate

22.

-On opposite side, slide 'Living linear connector' (L). Ensure left plate covers join. Tighten all left thumbscrews

23.

-Slide right plate into first body.



24.

-Ensure spring is tensioned. Tighten all thumbscrews on right plate.

25.

Ensure light tray clips are positioned in appropriate location(see figure 1)
Attach light tray into clips.
Connect the appropriate plugs.

26.

-Attach Lens(D) back into the mainbody.