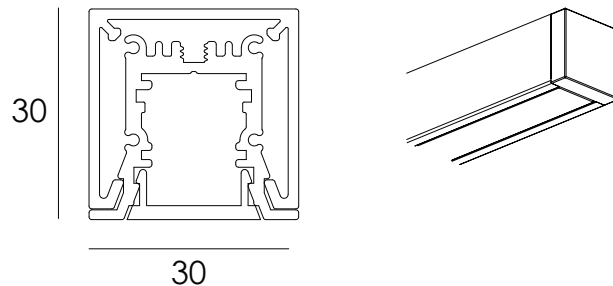
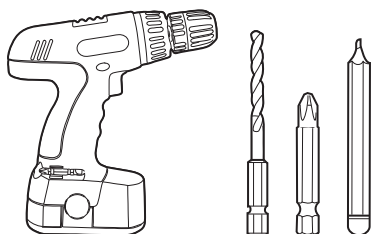


**INSTALLATION:** Ensure that products are mounted with supplied, recommended or appropriate screws and fixings to suit the mounting surface.

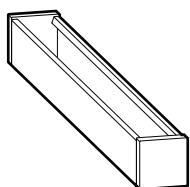
**WARNING:** Installation is only to be carried out by suitably qualified persons in accordance with installation instructions and all applicable regulations or standards. (Improper installation can create an electrical hazard with risk of electric shock, fire or injury). Darkon will not be held responsible for any consequences arising from improper product handling, storage or installation.

## TOOLS REQUIRED:

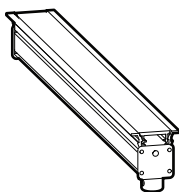
Power drill / Drill bit / Driver / Pencil



## COMPONENTS:



**A XI**



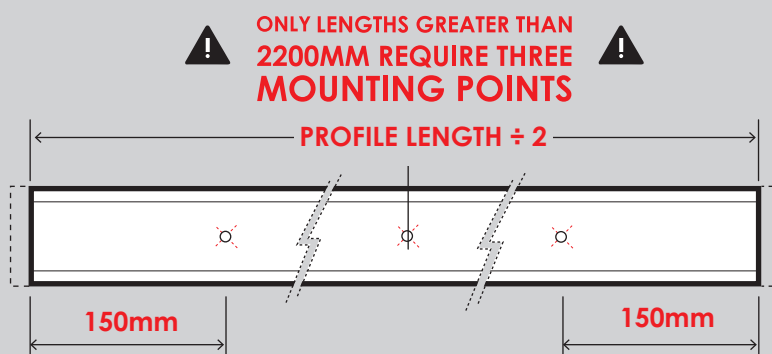
**B XI**

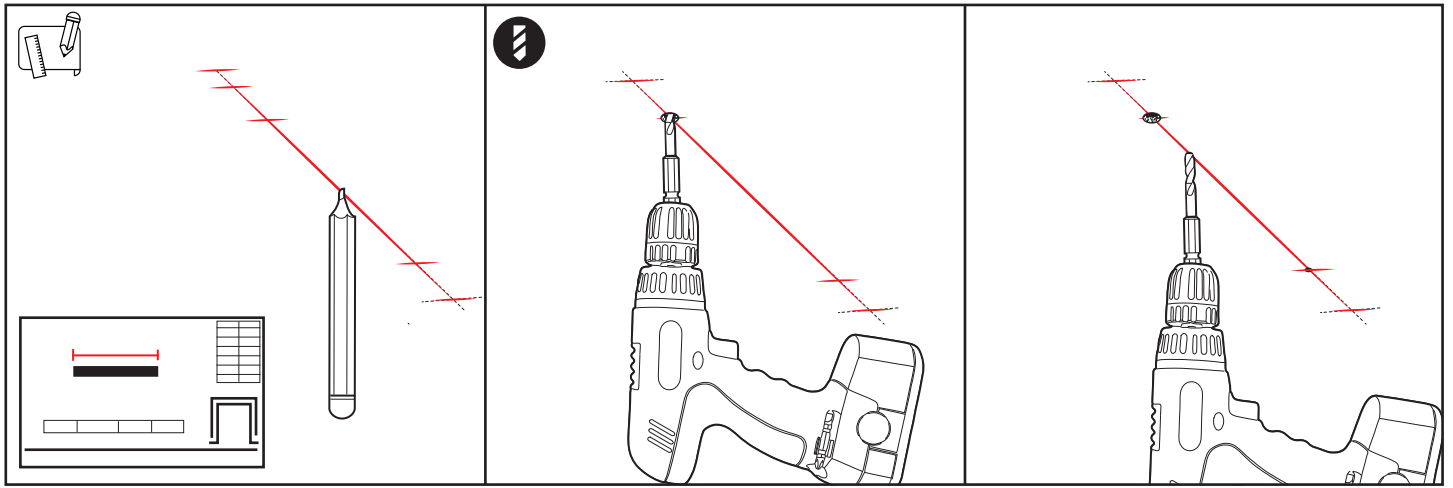


**C**  
**NOT**  
**SUPPLIED**

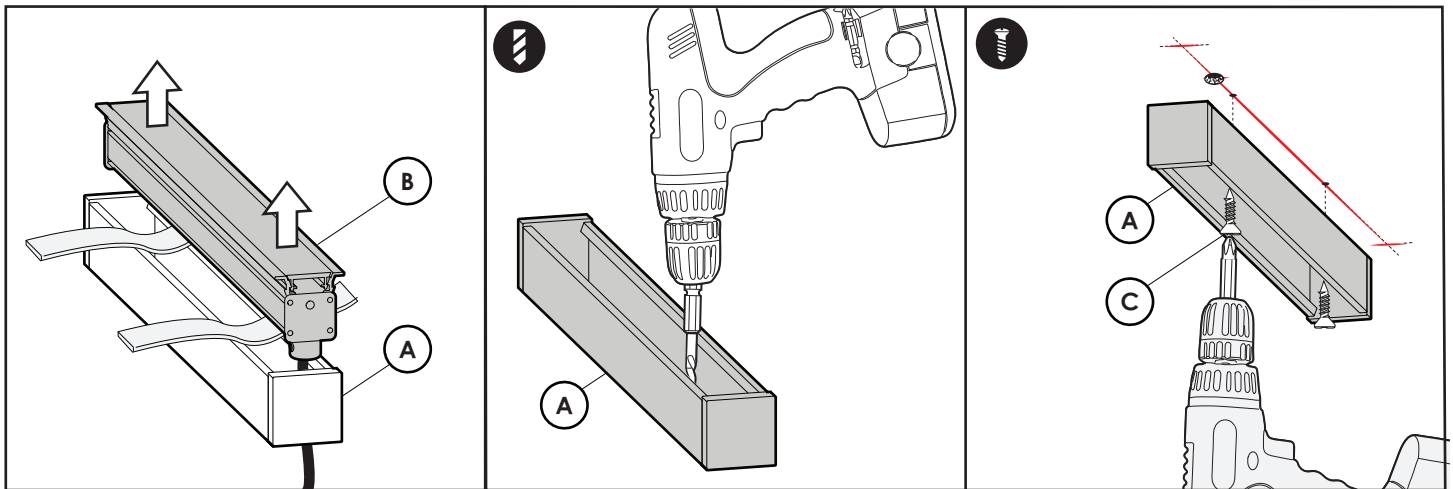
## NOTES:

Fittings exceeding 2.2m require a third mounting point central to the profile.

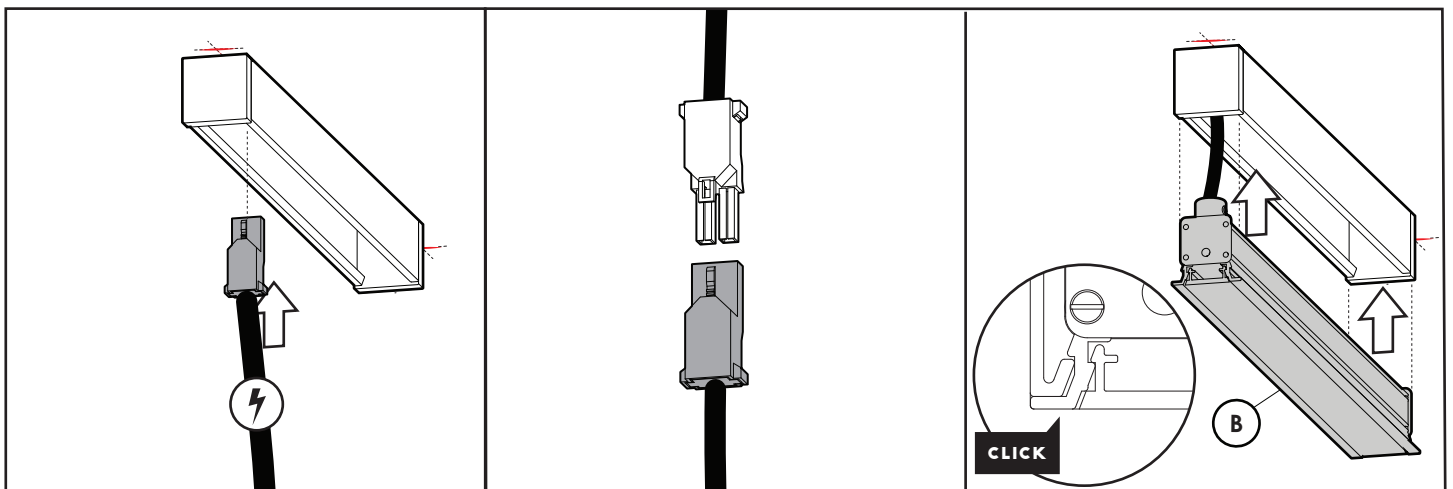




- 1.**  
-Utilising supplied Darkon Shop drawing, measure and mark position of light fitting.
- 2.**  
-Drill Appropriate size hole for powerfeed.
- 3.**  
-Drill appropriate size pilot holes for fasteners if necessary.



- 4.**  
-Remove mainbody(B) from the surfacebody(A). Remove supplied straps.
- 5.**  
-Drill appropriate sized holes for fasteners onto surfacebody(A).
- 6.**  
-Fix Surfacebody(A) onto ceiling with appropriate fasteners(not supplied)



- 7.**  
-Insert plug through the surfacebody cutout and into previously drilled powerfeed hole in ceiling.
- 8.**  
-Connect necessary plugs.
- 9.**  
-Insert the mainbody(B) into surfacebody(A) by clicking in the snap fit detail (inset).