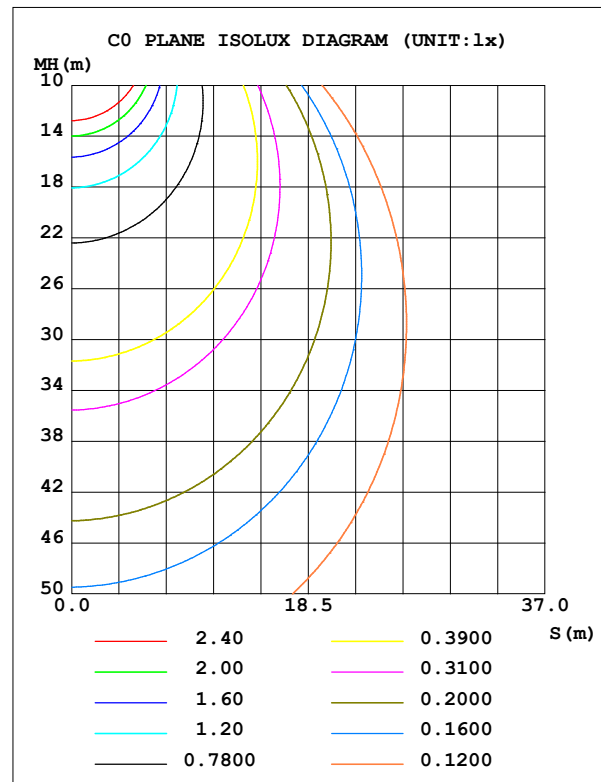
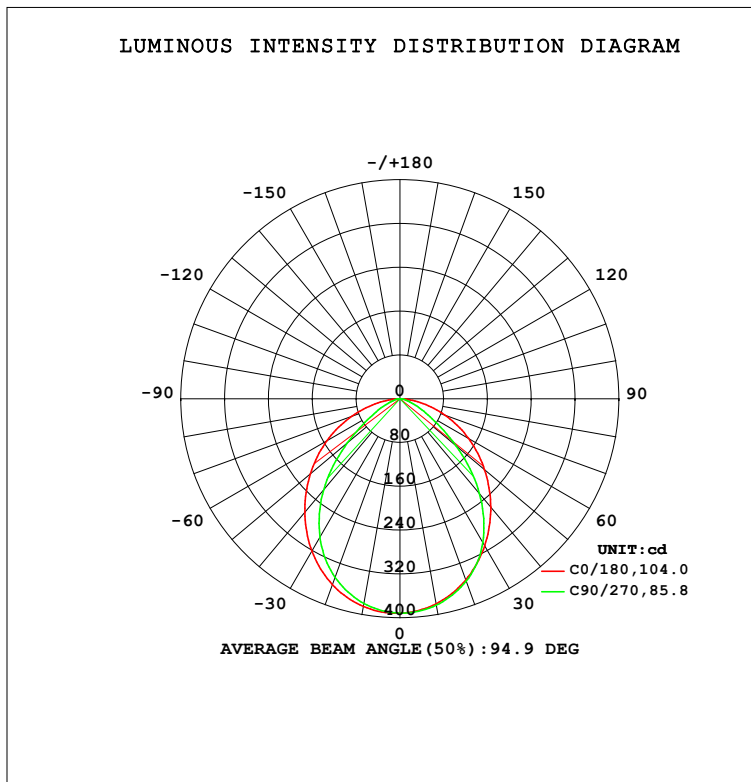


**LUMINAIRE PHOTOMETRIC TEST REPORT**

Test:U:239.98V I:0.1080A P:17.242W PF:0.6653 Freq:50.09Hz Lamp Flux:859.526x1 lm		
NAME: SUPER MINI SKIRT SUS_1085_WHT_OPAL V_DPAL-007_3KTYPE:LED	WEIGHT:	
SPEC.:	DIM.:	SERIAL No.:
MFR.: DARKON	SUR.:	Shielding Angle:

DATA OF LAMP		PHOTOMETRIC DATA				Eff: 49.85 lm/W
MODEL	DPAL-007 3000K	I <sub>max</sub> (cd)	391.8	S/MH (C0/180)	1.23	
NOMINAL POWER (W)		LOR (%)	100.0	S/MH (C90/270)	1.13	
RATED VOLTAGE (V)	220.0	TOTAL FLUX (lm)	859.53	η UP,DN (C0-180)	0.0, 50.6	
NOMINAL FLUX (lm)	859.526	CIE CLASS	DIRECT	η UP,DN (C180-360)	0.0, 49.4	
LAMPS INSIDE	1	η up (%)	0.0	CIBSE SHR NOM	1.25	
TEST VOLTAGE (V)	230	η down (%)	100.0	CIBSE SHR MAX	1.35	



C Range: 0 - 360DEG  
C Interval: 22.5DEG  
Test Speed: HIGH  
Temperature: 25.3DEG  
Operators: JEFF  
Test Date: 17 September 2020

γ Range: 0 - 90DEG  
γ Interval: 1.0DEG  
Test System: EVERFINE GO-2000A\_V1 SYSTEM V2.0.366  
Humidity: 65.0%  
Test Distance: 7.250m [K=1.0000]  
Remarks:

### ZONAL FLUX DIAGRAM

ZONAL FLUX DIAGRAM:

$\gamma$	C0	C45	C90	C135	C180	C225	C270	C315	$\gamma$	$\Phi$ zone	$\Phi$ total	%lum, lamp
10	380.2	382.1	382.8	383.8	385.1	382.0	379.5	379.4	0- 10	36.91	36.91	4.29,4.29
20	351.9	354.4	354.5	358.1	361.0	353.4	347.0	349.3	10- 20	104.2	141.1	16.4,16.4
30	309.8	311.3	302.9	316.2	321.5	308.5	292.2	303.6	20- 30	153.2	294.4	34.2,34.2
40	258.1	252.0	226.2	256.8	270.7	247.6	216.6	243.6	30- 40	174.2	468.5	54.5,54.5
50	201.9	180.0	134.1	182.8	213.5	175.8	125.3	173.7	40- 50	162.5	631.0	73.4,73.4
60	144.6	102.3	58.78	102.1	154.5	95.15	54.39	96.32	50- 60	122.1	753.1	87.6,87.6
70	87.61	36.09	22.97	36.22	93.97	32.74	20.11	32.37	60- 70	71.77	824.8	96.96
80	33.13	8.770	7.359	9.314	36.21	7.684	5.690	7.199	70- 80	29.46	854.3	99.4,99.4
90	0.4513	0.2946	0.2695	0.3792	0.4670	0.2319	0.1191	0.2225	80- 90	5.217	859.5	100,100
100									90-100			
110									100-110			
120									110-120			
130									120-130			
140									130-140			
150									140-150			
160									150-160			
170									160-170			
180									170-180			
DEG	LUMINOUS INTENSITY:cd									UNIT:lm		

Conical surface Flux(90deg): 553.24 lm

%lum = 64.4%

%lamp = 64.4%

Conical surface Flux(120deg): 753.08 lm

%lum = 87.6%

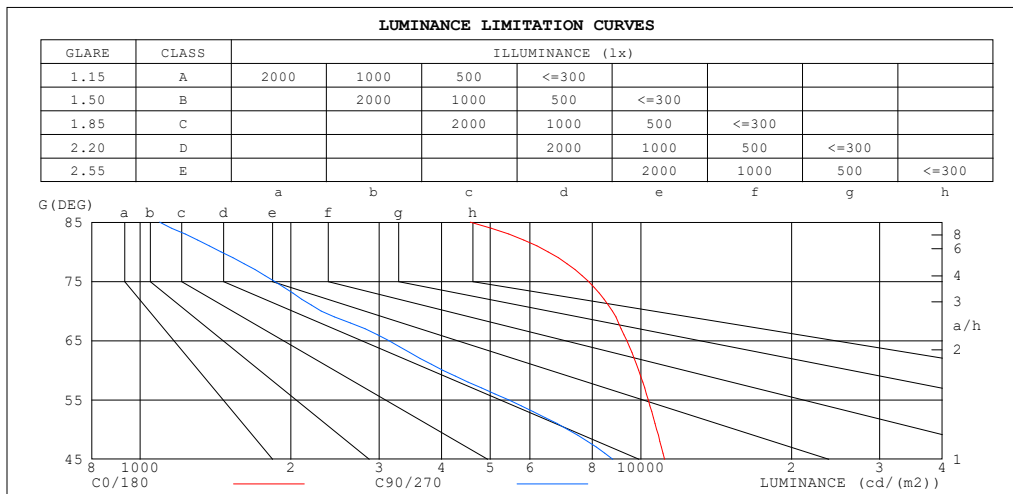
%lamp = 87.6%

C Range: 0 - 360DEG  
C Interval: 22.5DEG  
Test Speed: HIGH  
Temperature:25.3DEG  
Operators:JEFF  
Test Date:17 September 2020

$\gamma$  Range: 0 - 90DEG  
 $\gamma$  Interval: 1.0DEG  
Test System:EVERFINE GO-2000A\_V1 SYSTEM V2.0.366  
Humidity:65.0%  
Test Distance:7.250m [K=1.0000]  
Remarks:

**LUMINANCE LIMITATION CURVES**

Test:U:239.98V I:0.1080A P:17.242W PF:0.6653 Freq:50.09Hz Lamp Flux:859.526x1 lm		
NAME: SUPER MINI SKIRT SUS_1085_WHT_OPAL V_DPAL-007_3KTYPE:LED	WEIGHT:	
SPEC.:	DIM.:	SERIAL No.:
MFR.: DARKON	SUR.:	Shielding Angle:



LUMINANCE cd/(m2)		
G(DEG)	C0/180	C90/270
85	4564	1094
80	6533	1451
75	7861	1856
70	8773	2300
65	9378	3137
60	9902	4026
55	10348	5437
50	10757	7147
45	11153	8786

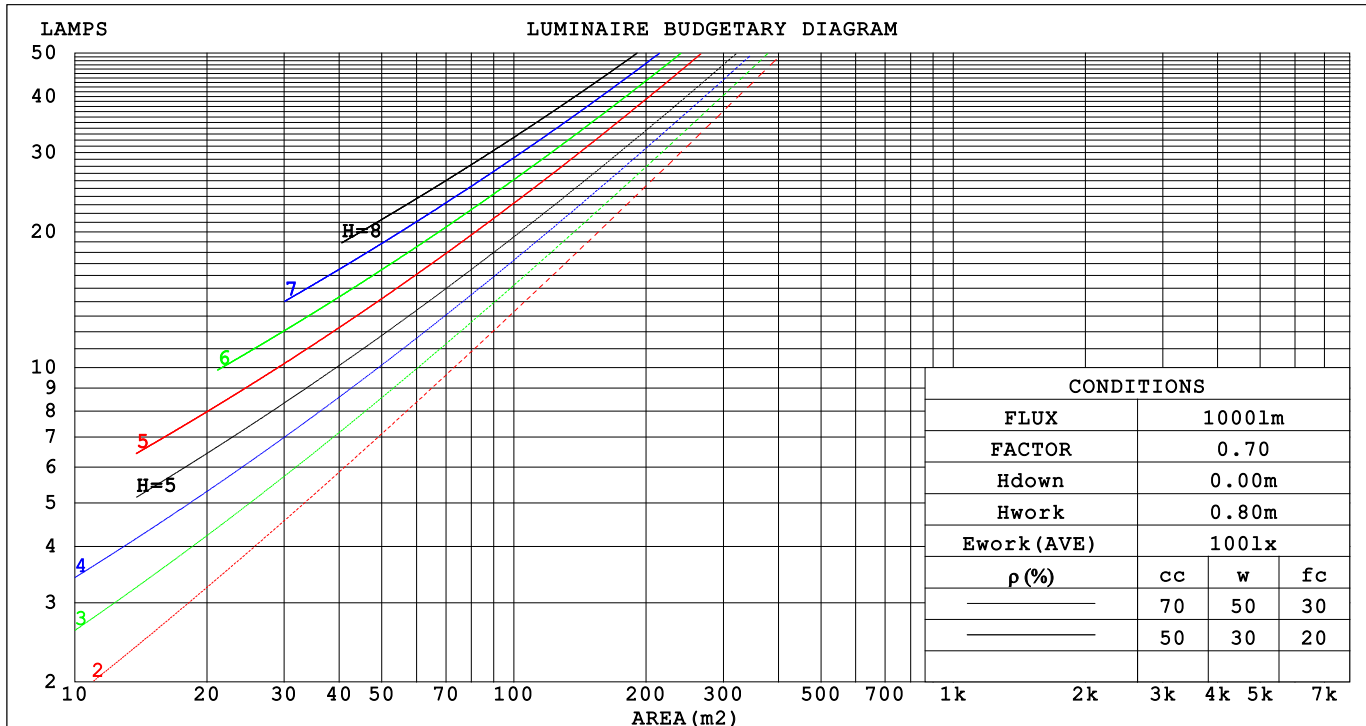
C Range: 0 - 360DEG  
C Interval: 22.5DEG  
Test Speed: HIGH  
Temperature:25.3DEG  
Operators:JEFF  
Test Date:17 September 2020

γ Range: 0 - 90DEG  
γ Interval: 1.0DEG  
Test System:EVERFINE GO-2000A\_V1 SYSTEM V2.0.366  
Humidity:65.0%  
Test Distance:7.250m [K=1.0000]  
Remarks:

**CU AND LUMINAIRE BUDGETARY ESTIMATE DIAGRAM**

Test:U:239.98V I:0.1080A P:17.242W PF:0.6653 Freq:50.09Hz Lamp Flux:859.526x1 lm		
NAME: SUPER MINI SKIRT SUS_1085_WHT_OPAL V_DPAL-007_3KTYPE:LED	WEIGHT:	
SPEC.:	DIM.:	SERIAL No.:
MFR.: DARKON	SUR.:	Shielding Angle:

pcc	80%			70%			50%			30%			10%			0
pw	50%	30%	10%	50%	30%	10%	50%	30%	10%	50%	30%	10%	50%	30%	10%	0
pfc	20%			20%			20%			20%			20%			0
RCR	RCR:Room Cavity Ratio															



C Range: 0 - 360DEG  
C Interval: 22.5DEG  
Test Speed: HIGH  
Temperature:25.3DEG  
Operators:JEFF  
Test Date:17 September 2020

γ Range: 0 - 90DEG  
γ Interval: 1.0DEG  
Test System:EVERFINE GO-2000A\_V1 SYSTEM V2.0.366  
Humidity:65.0%  
Test Distance:7.250m [K=1.0000]  
Remarks:

## WEC AND CCEC

Test:U:239.98V I:0.1080A P:17.242W PF:0.6653 Freq:50.09Hz Lamp Flux:859.526x1 lm		
NAME: SUPER MINI SKIRT SUS_1085_WHT_OPAL V_DPAL-007	3KTYPE:LED	WEIGHT:
SPEC.:	DIM.:	SERIAL No.:
MFR.: DARKON	SUR.:	Shielding Angle:

pcc	80%			70%			50%			30%			10%			0
pw	50%	30%	10%	50%	30%	10%	50%	30%	10%	50%	30%	10%	50%	30%	10%	0
pfc	20%			20%			20%			20%			20%			0
RCR	RCR:Room Cavity Ratio						Wall Exitance Coefficients (WEC)									
0.0																
1.0	.263	.150	.047	.256	.146	.046	.243	.140	.045	.231	.133	.043	.220	.128	.041	
2.0	.254	.139	.043	.248	.137	.042	.237	.132	.041	.227	.127	.040	.217	.123	.039	
3.0	.240	.128	.038	.235	.126	.038	.225	.122	.037	.216	.118	.036	.207	.115	.035	
4.0	.225	.117	.034	.220	.115	.034	.212	.112	.033	.203	.109	.033	.196	.106	.032	
5.0	.211	.107	.031	.206	.106	.031	.199	.103	.030	.191	.101	.030	.185	.099	.030	
6.0	.197	.099	.028	.194	.098	.028	.187	.096	.028	.180	.094	.028	.174	.092	.027	
7.0	.185	.092	.026	.182	.091	.026	.176	.089	.026	.170	.087	.025	.164	.085	.025	
8.0	.174	.085	.024	.171	.084	.024	.166	.083	.024	.160	.081	.023	.155	.080	.023	
9.0	.164	.079	.022	.162	.079	.022	.157	.077	.022	.152	.076	.022	.147	.075	.022	
10.0	.155	.074	.021	.153	.074	.021	.148	.073	.020	.144	.072	.020	.140	.070	.020	

pcc	80%			70%			50%			30%			10%			0
pw	50%	30%	10%	50%	30%	10%	50%	30%	10%	50%	30%	10%	50%	30%	10%	0
pfc	20%			20%			20%			20%			20%			0
RCR	RCR:Room Cavity Ratio						Ceiling Cavity Exitance Coefficients(CCEC)									
0.0	.190	.190	.190	.163	.163	.163	.111	.111	.111	.064	.064	.064	.020	.020	.020	
1.0	.177	.157	.138	.152	.134	.119	.104	.092	.082	.060	.053	.048	.019	.017	.015	
2.0	.167	.132	.103	.143	.114	.089	.098	.079	.062	.057	.046	.036	.018	.015	.012	
3.0	.159	.114	.079	.136	.098	.068	.093	.068	.048	.054	.040	.028	.017	.013	.009	
4.0	.151	.100	.062	.129	.087	.054	.089	.060	.038	.052	.035	.022	.017	.012	.007	
5.0	.144	.090	.050	.123	.078	.044	.085	.054	.031	.049	.032	.018	.016	.010	.006	
6.0	.137	.081	.041	.118	.070	.036	.081	.049	.026	.047	.029	.015	.015	.009	.005	
7.0	.130	.074	.035	.112	.064	.031	.077	.045	.022	.045	.027	.013	.015	.009	.004	
8.0	.124	.068	.030	.107	.059	.026	.074	.042	.019	.043	.025	.011	.014	.008	.004	
9.0	.119	.064	.026	.102	.055	.023	.071	.039	.016	.041	.023	.010	.013	.008	.003	
10.0	.113	.059	.023	.098	.051	.020	.068	.036	.014	.039	.021	.009	.013	.007	.003	

C Range: 0 - 360DEG  
C Interval: 22.5DEG  
Test Speed: HIGH  
Temperature:25.3DEG  
Operators:JEFF  
Test Date:17 September 2020

γ Range: 0 - 90DEG  
γ Interval: 1.0DEG  
Test System:EVERFINE GO-2000A\_V1 SYSTEM V2.0.366  
Humidity:65.0%  
Test Distance:7.250m [K=1.0000]  
Remarks:

**UGR(Unified Glare Rating) Table**

Test:U:239.98V I:0.1080A P:17.242W PF:0.6653 Freq:50.09Hz Lamp Flux:859.526x1 lm										
NAME: SUPER MINI SKIRT SUS_1085_WHT_OPAL V_DPAL-007_3KTYPE:LED						WEIGHT:				
SPEC.:						DIM.:		SERIAL No.:		
MFR.: DARKON						SUR.:		Shielding Angle:		
ceiling/cavity	0.7	0.7	0.5	0.5	0.3	0.7	0.7	0.5	0.5	0.3
walls	0.5	0.3	0.5	0.3	0.3	0.5	0.3	0.5	0.3	0.3
working plane	0.2	0.2	0.2	0.2	0.2	0.2	0.2	0.2	0.2	0.2
Room dimensions						Viewed crosswise				
x = 2H y = 2H						Viewed endwise				
3H						18.8	20.2	19.1	20.4	20.6
4H						19.1	20.4	19.4	20.6	20.8
6H						19.1	20.3	19.4	20.6	20.8
8H						19.1	20.2	19.4	20.5	20.8
12H						19.1	20.2	19.4	20.5	20.7
4H 2H						19.1	20.1	19.4	20.4	20.7
3H						21.7	23.1	22.0	23.3	23.5
4H						23.1	24.3	23.3	24.6	24.8
6H						23.5	24.7	23.8	25.0	25.2
8H						23.8	25.0	24.1	25.2	25.5
12H						23.9	25.0	24.2	25.3	25.5
4H 4H						23.9	25.0	24.3	25.3	25.6
3H						19.4	20.6	19.7	20.9	21.1
4H						23.3	24.4	23.7	24.7	25.0
6H						23.9	24.8	24.3	25.2	25.5
8H						24.2	25.1	24.6	25.4	25.8
12H						24.3	25.1	24.8	25.5	25.9
8H 4H						24.4	25.1	24.8	25.5	25.9
6H						19.8	20.6	19.4	20.4	20.7
8H						20.0	20.8	20.4	21.1	21.5
12H						20.1	20.7	20.5	21.1	21.5
4H 4H						20.1	20.6	20.5	21.1	21.5
6H						20.1	20.6	20.5	21.0	21.5
8H						20.1	20.6	20.5	21.0	21.5
12H 4H						20.1	20.6	20.6	21.0	21.5
6H						23.8	24.5	24.2	24.9	25.3
8H						24.2	24.7	24.6	25.2	25.6
12H						24.3	24.8	24.8	25.2	25.7
Variations with the observer position at spacings:										
S = 1.0H						+ 0.2 / - 0.3		+ 0.8 / - 1.0		
1.5H						+ 0.2 / - 0.3		+ 0.4 / - 0.6		
2.0H						+ 0.5 / - 0.7		+ 1.3 / - 2.1		

CIE Pub.117, 859.5 lm Total Lamp Luminous Flux Correct ( $8\log(F/F_0) = -0.5$ )

C Range: 0 - 360DEG  
C Interval: 22.5DEG  
Test Speed: HIGH  
Temperature:25.3DEG  
Operators:JEFF  
Test Date:17 September 2020

$\gamma$  Range: 0 - 90DEG  
 $\gamma$  Interval: 1.0DEG  
Test System:EVERFINE GO-2000A\_V1 SYSTEM V2.0.366  
Humidity:65.0%  
Test Distance:7.250m [K=1.0000]  
Remarks:

**UTILIZATION FACTORS TABLE**

Test:U:239.98V I:0.1080A P:17.242W PF:0.6653 Freq:50.09Hz Lamp Flux:859.526x1 lm		
NAME: SUPER MINI SKIRT SUS_1085_WHT_OPAL V_DPAL-007	_3KTYPE:LED	WEIGHT:
SPEC.:	DIM.:	SERIAL No.:
MFR.: DARKON	SUR.:	Shielding Angle:

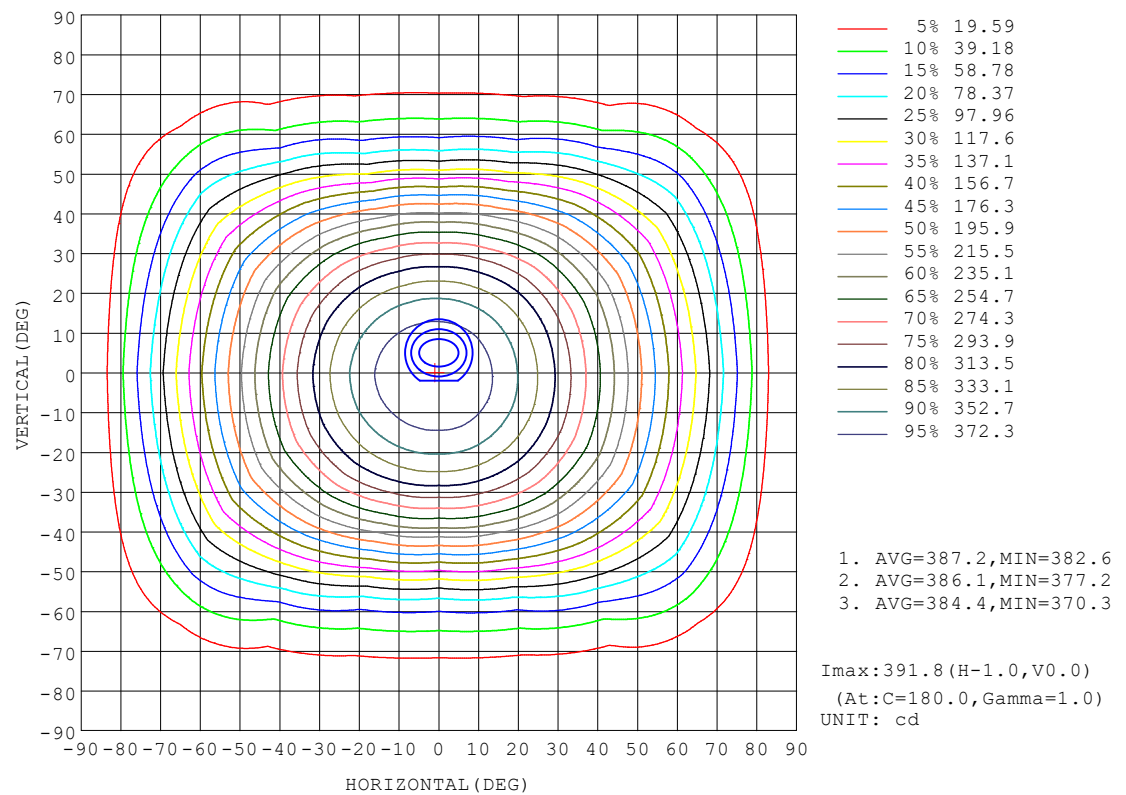
REFLECTANCE										
Ceiling	0.8	0.8	0.8	0.7	0.7	0.7	0.5	0.5	0.5	0
Walls	0.7	0.5	0.3	0.7	0.5	0.3	0.7	0.5	0.3	0
Working plane	0.2	0.2	0.2	0.2	0.2	0.2	0.2	0.2	0.2	0
ROOM INDEX	UTILIZATION FACTORS (PERCENT) $k(RI) \times RCR = 5$									
$k = 0.60$	63	52	46	62	52	46	61	52	46	40
0.80	73	63	56	72	62	56	71	62	56	49
1.00	81	72	65	80	71	65	78	72	64	58
1.25	88	79	73	87	78	73	84	77	72	65
1.50	93	84	78	91	83	78	89	82	77	70
2.00	99	92	86	97	91	85	94	88	84	77
2.50	102	96	90	100	94	90	97	92	88	80
3.00	105	99	95	103	98	94	99	95	91	84
4.00	109	104	100	106	102	98	102	99	96	87
5.00	111	106	103	108	105	101	104	101	98	90
ROOM INDEX	UF(total)									Direct
According to DIN EN 13032-2 2004			Suspended					SHRNOM = 1.25		

C Range: 0 - 360DEG  
C Interval: 22.5DEG  
Test Speed: HIGH  
Temperature:25.3DEG  
Operators:JEFF  
Test Date:17 September 2020

$\gamma$  Range: 0 - 90DEG  
 $\gamma$  Interval: 1.0DEG  
Test System:EVERFINE GO-2000A\_V1 SYSTEM V2.0.366  
Humidity:65.0%  
Test Distance:7.250m [K=1.0000]  
Remarks:

**ISOCANDELA DIAGRAM**

Test:U:239.98V I:0.1080A P:17.242W PF:0.6653 Freq:50.09Hz Lamp Flux:859.526x1 lm		
NAME: SUPER MINI SKIRT SUS_1085_WHT_OPAL V_DPAL-007_3KTYPE:LED	WEIGHT:	
SPEC.:	DIM.:	SERIAL No.:
MFR.: DARKON	SUR.:	Shielding Angle:



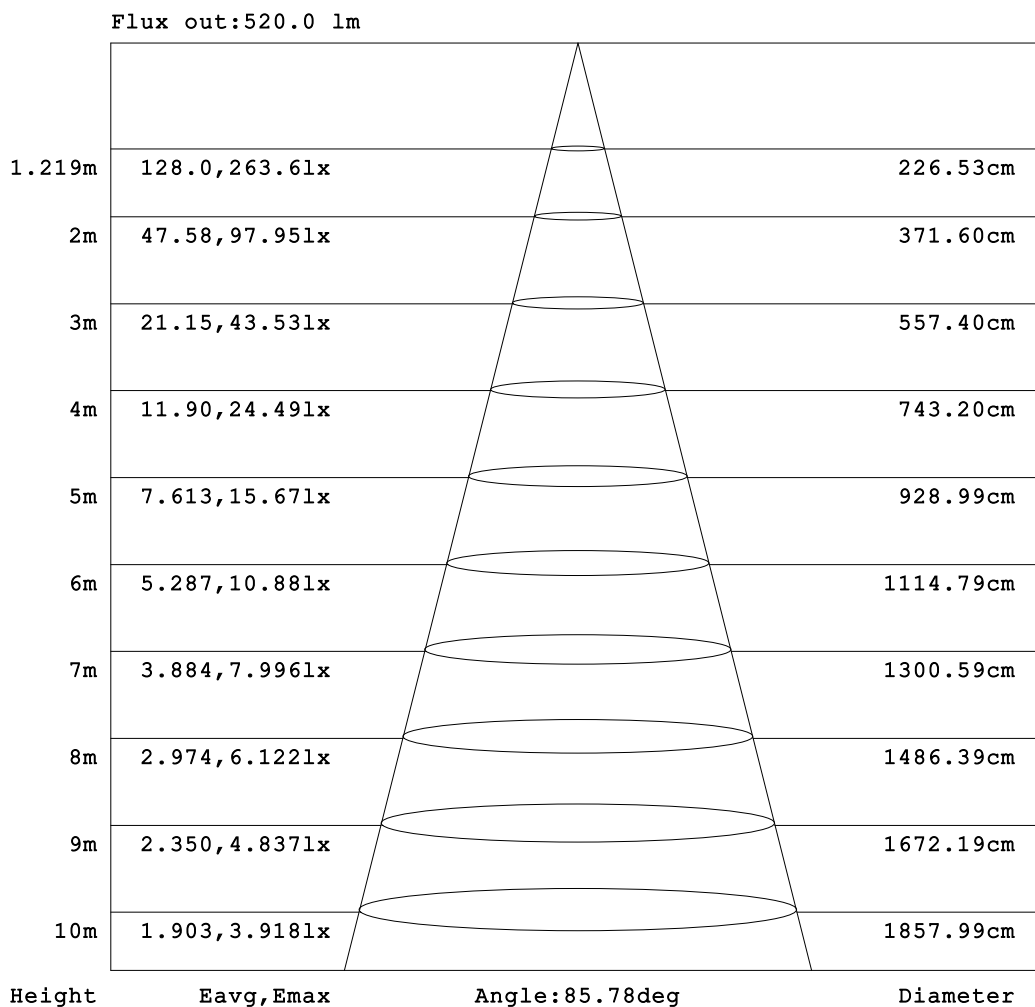
C Range: 0 - 360DEG  
 C Interval: 22.5DEG  
 Test Speed: HIGH  
 Temperature:25.3DEG  
 Operators:JEFF  
 Test Date:17 September 2020

$\gamma$  Range: 0 - 90DEG  
 $\gamma$  Interval: 1.0DEG  
 Test System:EVERFINE GO-2000A\_V1 SYSTEM V2.0.366  
 Humidity:65.0%  
 Test Distance:7.250m [K=1.0000]  
 Remarks:



**AAI Figure**

Test:U:239.98V I:0.1080A P:17.242W PF:0.6653 Freq:50.09Hz Lamp Flux:859.526x1 lm		
NAME: SUPER MINI SKIRT SUS_1085_WHT_OPAL V_DPAL-007_3KTYPE:LED	WEIGHT:	
SPEC.:	DIM.:	SERIAL No.:
MFR.: DARKON	SUR.:	Shielding Angle:



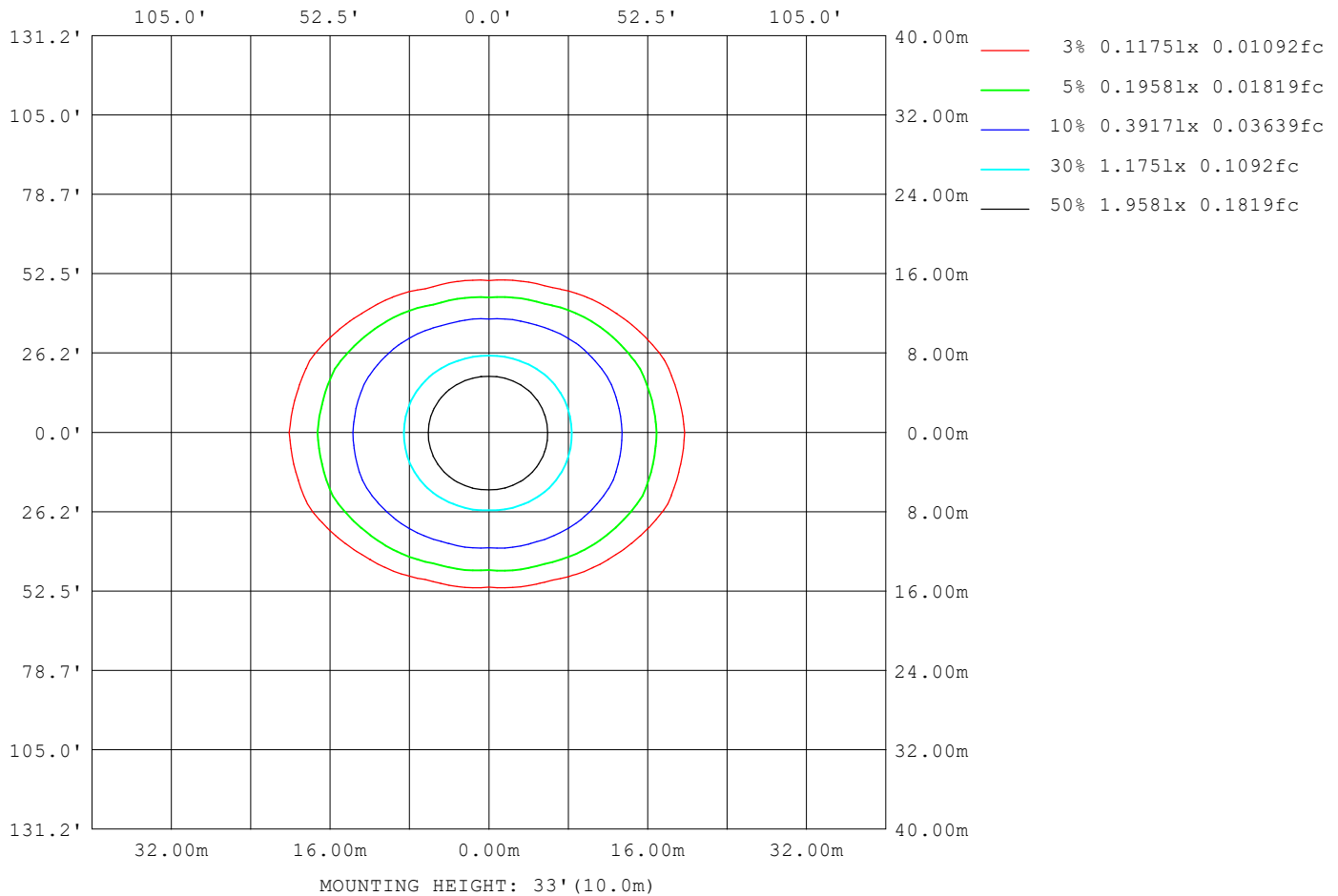
Note:The Curves indicate the illuminated area and the average illumination when the luminaire is at different distance.

C Range: 0 - 360DEG  
C Interval: 22.5DEG  
Test Speed: HIGH  
Temperature:25.3DEG  
Operators:JEFF  
Test Date:17 September 2020

γ Range: 0 - 90DEG  
γ Interval: 1.0DEG  
Test System:EVERFINE GO-2000A\_V1 SYSTEM V2.0.366  
Humidity:65.0%  
Test Distance:7.250m [K=1.0000]  
Remarks:

**ISOLUX DIAGRAM**

Test:U:239.98V I:0.1080A P:17.242W PF:0.6653 Freq:50.09Hz Lamp Flux:859.526x1 lm		
NAME: SUPER MINI SKIRT SUS_1085_WHT_OPAL V_DPAL-007	_3KTYPE:LED	WEIGHT:
SPEC.:	DIM.:	SERIAL No.:
MFR.: DARKON	SUR.:	Shielding Angle:



C Range: 0 - 360DEG  
C Interval: 22.5DEG  
Test Speed: HIGH  
Temperature:25.3DEG  
Operators:JEFF  
Test Date:17 September 2020

γ Range: 0 - 90DEG  
γ Interval: 1.0DEG  
Test System:EVERFINE GO-2000A\_V1 SYSTEM V2.0.366  
Humidity:65.0%  
Test Distance:7.250m [K=1.0000]  
Remarks:

**LED Avg.L Report**

Test:U:239.98V I:0.1080A P:17.242W PF:0.6653 Freq:50.09Hz Lamp Flux:859.526x1 lm		
NAME: SUPER MINI SKIRT SUS_1085_WHT_OPAL V_DPAL-007	_3KTYPE:LED	WEIGHT:
SPEC.:	DIM.:	SERIAL No.:
MFR.: DARKON	SUR.:	Shielding Angle:

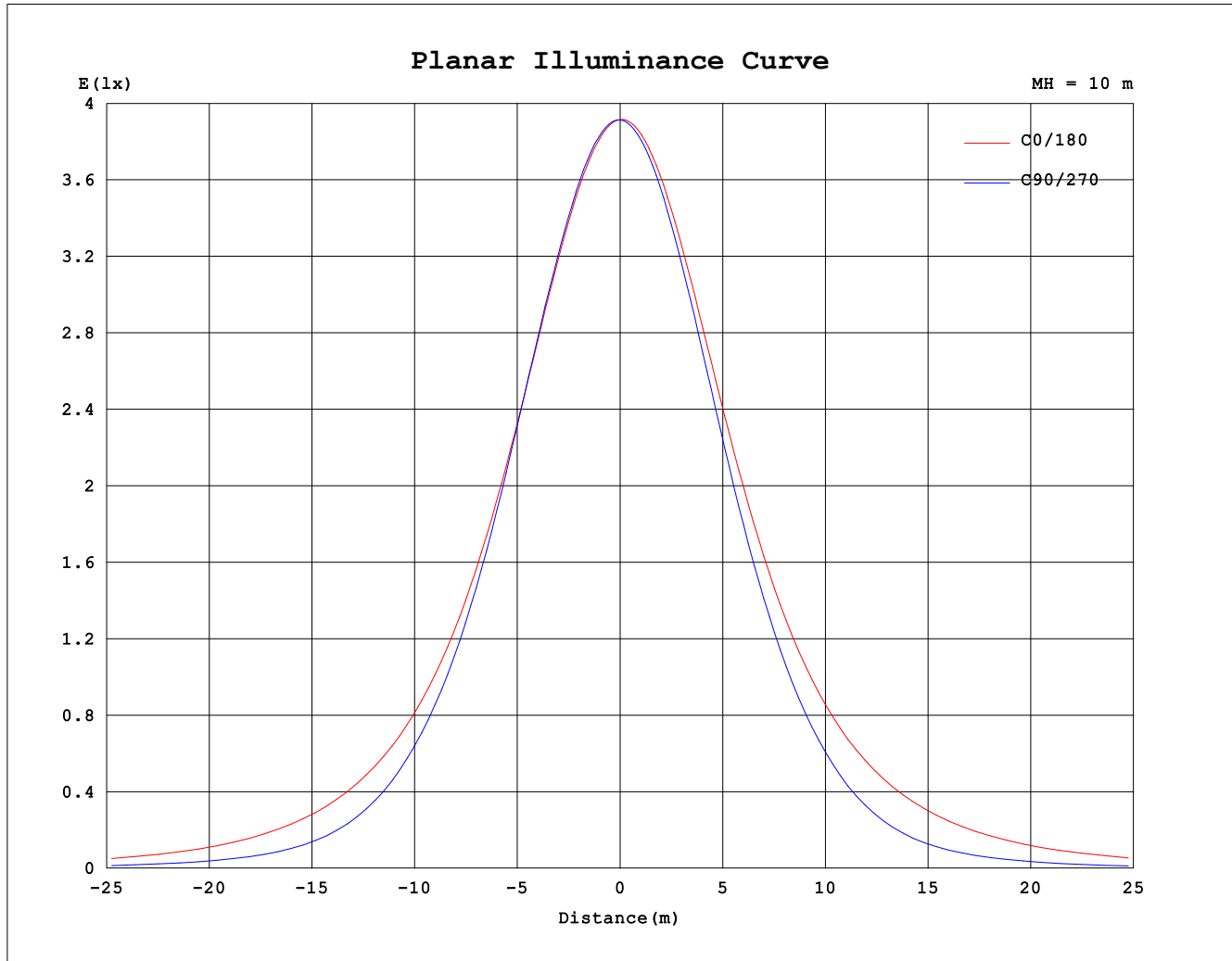
AvgL	cd/m2
L_0~180(65)av	9722
L_0~180(75)av	8177
L_0~180(85)av	4852
L_90~270(65)av	2979
L_90~270(75)av	1707
L_90~270(85)av	899
L_45(65)av	5007
L_45(75)av	2249
L_45(85)av	1080

Standard: GB/T 29293-2012

C Range: 0 - 360DEG  
C Interval: 22.5DEG  
Test Speed: HIGH  
Temperature:25.3DEG  
Operators:JEFF  
Test Date:17 September 2020

γ Range: 0 - 90DEG  
γ Interval: 1.0DEG  
Test System:EVERFINE GO-2000A\_V1 SYSTEM V2.0.366  
Humidity:65.0%  
Test Distance:7.250m [K=1.0000]  
Remarks:

### Planar Illuminance Curve



C Range: 0 - 360DEG  
C Interval: 22.5DEG  
Test Speed: HIGH  
Temperature: 25.3DEG  
Operators: JEFF  
Test Date: 17 September 2020

$\gamma$  Range: 0 - 90DEG  
 $\gamma$  Interval: 1.0DEG  
Test System: EVERFINE GO-2000A\_V1 SYSTEM V2.0.366  
Humidity: 65.0%  
Test Distance: 7.250m [K=1.0000]  
Remarks:

```

γ Range: 0 - 90DEG
γ Interval: 1.0DEG
Test System:EVERFINE GO-2000A_V1 SYSTEM V2.0.366
Humidity:65.0%
Test Distance:7.250m [K=1.0000]
Remarks:

```